

Indiana District 3 Multi-Jurisdictional Community Health Assessment Report



This report was supported by the Cooperative Agreement Number 5U58CD001-308-02 from The Centers for Disease Control and Prevention. Its contents are solely the responsibility of the authors and do not necessarily represent the official views of The Centers for Disease Control and Prevention.

Prepared by Purdue
Healthcare Advisors

1435 Win Hentschel Blvd,
West Lafayette IN 47906

(765) 496-1911

11/12/2012

Updated 09/25/2014



TABLE OF CONTENTS

SOCIODEMOGRAPHIC PROFILE.....4

 POPULATION CHARACTERISTICS.....5

 Growth..... 5

 Age..... 6

 Race.....9

 Ethnicity..... 12

 Grandparents..... 15

 Households.....16

 Residence Patterns.....17

 Income..... 18

 Household Income.....20

 Employment.....21

 Occupation..... 22

 Commute..... 23

 Disability.....24

 Poverty.....25

 Education..... 26

COUNTY HEALTH PROFILE.....27

 COUNTY HEALTH RANKINGS..... 28

 Health Outcomes.....28

 Health Factors.....29

 CAUSES of DEATH..... 30

 All Causes of Death..... 30

 Top Ten Leading Causes of Death..... 31

Top Three Cardiovascular Diseases.....	33
Top Four Cancers.....	34
RISK FACTORS.....	35
Diabetes.....	35
Obesity.....	37
Physical Inactivity.....	40
Hypertension.....	42
Smoking.....	43
Tobacco-Free Policies.....	44
Poor Mental Health.....	45
Substance Abuse.....	46
Arrests.....	47
Personal Safety.....	48
Maternal and Child Health.....	49
HEALTHCARE ACCESS.....	57
Health Insurance Coverage.....	57
Professional Shortage and Medically Underserved Areas.....	8
APPENDIX A.....	63
ALL OTHER DISEASES.....	64

SOCIODEMOGRAPHIC PROFILE

POPULATION CHARACTERISTICS

GROWTH

Table 1. Population Growth, 2000-2011

	2000 Population	2010 Population	Ten Year Change	2011 Population Estimate	One Year Change
Huntington	38,075	37,124	-2.5%	37,211	+0.2%
Noble	46,275	47,536	+2.7%	47,553	+0.0%
Wabash	34,960	32,888	-5.9%	32,608	-0.9%
Wells	27,600	27,636	+0.1%	27,734	+0.4%
Whitley	30,707	33,292	+8.4%	33,392	+0.3%
Total Five Counties	177,617	178,476	+5%	178,468	-0.0%
Indiana	6,080,485	6,483,802	+6.6%	6,516,922	+0.5%

Source: U.S. Census Bureau

AGE

Table 2. Numbers in 2000

	0-4 Years	5-17 Years	18-24 Years	25-44 Years	45-64 Years	65+ Years
Huntington	2,536	7,412	3,759	10,714	8,297	5,357
Noble	3,695	9,729	4,251	13,869	9,629	5,102
Wabash	2,073	6,504	3,612	9,150	8,135	5,486
Wells	1,835	5,703	2,284	7,755	6,132	3,891
Whitley	2,101	6,112	2,486	8,866	7,138	4,004
Total Five Counties	12,240	35,460	16,392	50,354	39,331	23,840

Source: U.S. Census Bureau

Table 3. Numbers in 2010

	0-4 Years	5-17 Years	18-24 Years	25-44 Years	45-64 Years	65+ Years
Huntington	2,230	6,565	3,716	8,814	10,333	5,466
Noble	3,454	9,396	3,947	11,937	12,861	5,941
Wabash	1,924	5,535	3,295	7,187	8,995	5,952
Wells	1,810	5,089	2,190	6,350	7,857	4,340
Whitley	2,084	6,099	2,573	8,003	9,884	4,649
Total Five Counties	11,502	32,684	15,721	42,291	49,930	26,348

Source: U.S. Census Bureau

Table 4. Percentage Changes from 2000 to 2010

	0-4 Years	5-17 Years	18-24 Years	25-44 Years	45-64 Years	65+ Years
Huntington	-12.1%	-11.4%	-1.1%	-17.7%	24.5%	2.0%
Noble	-6.5%	-3.4%	-7.2%	-13.9%	33.6%	16.4%
Wabash	-7.2%	-14.9%	-8.8%	-21.5%	10.6%	8.5%
Wells	-1.4%	-10.8%	-4.1%	-18.1%	28.1%	11.5%
Whitley	-0.8%	-0.2%	3.5%	-9.7%	38.5%	16.1%
Total Five Counties	+0.9%	+0.1%	+3.4%	-10.0%	+27.3%	+11.2%

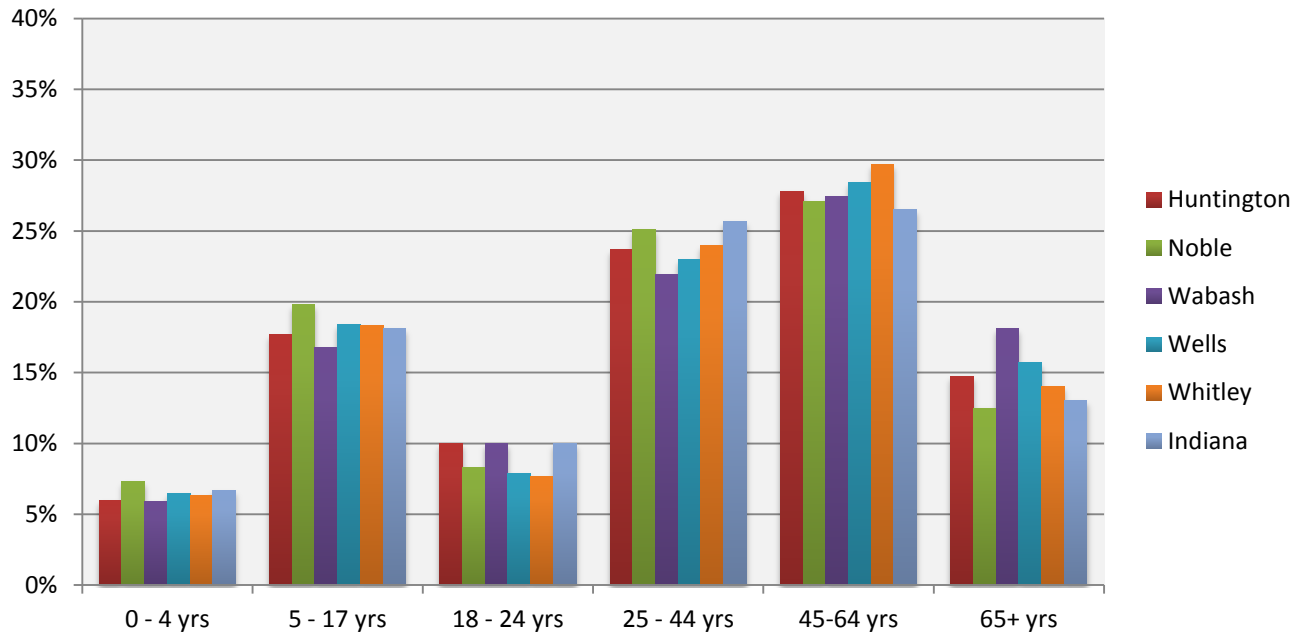
Source: U.S. Census Bureau

Table 5. Percentage Distribution in 2010

	0-4 Years	5-17 Years	18-24 Years	25-44 Years	45-64 Years	65+ Years
Huntington	6.0%	17.7%	10.0%	23.7%	27.8%	14.75
Noble	7.3%	19.8%	8.3%	25.1%	27.1%	12.5%
Wabash	5.9%	16.85	10.0%	21.9%	27.4%	18.1%
Wells	6.5%	18.4%	7.9%	23.0%	28.4%	15.7%
Whitley	6.3%	18.3%	7.7%	24.0%	29.7%	14.0%
Total Five Counties	6.4%	18.3%	8.8%	23.7%	28.0%	14.8%
Indiana	6.7%	18.1%	10.0%	25.7%	26.5%	13.0%

Source: U.S. Census Bureau

Figure 1. Percentage Distribution in 2010



Source: U.S. Census Bureau

RACE

Table 6. Numbers in 2000

	White	Black or African American	American Indian and Alaskan Native	Asian	Native Hawaiian and Other Pacific Islander	Some Other Race	Two or More Races
Huntington	37,371	69	157	118	4	99	257
Noble	43,490	189	115	168	9	1,870	434
Wabash	34,045	142	229	142	12	135	255
Wells	27,136	45	53	59	8	120	179
Whitley	30,205	57	110	55	13	91	176
Total Five Counties	172,247	502	664	542	46	2,315	1,301

Source: U.S. Census Bureau

Table 7. Numbers in 2010

	White	Black or African American	American Indian and Alaskan Native	Asian	Native Hawaiian and Other Pacific Islander	Some Other Race	Two or More Races
Huntington	36,062	160	140	167	8	168	419
Noble	43,970	185	102	176	6	2,472	625
Wabash	31,764	163	217	138	6	233	367
Wells	26,902	96	76	107	3	208	244
Whitley	32,479	99	92	105	7	132	378
Total Five Counties	171,177	703	627	693	30	3,213	2,033

Source: U.S. Census Bureau

Table 8. Percentage Changes from 2000 to 2010

	White	Black or African American	American Indian and Alaskan Native	Asian	Native Hawaiian and Other Pacific Islander	Some Other Race	Two or More Races
Huntington	-3.5	131.9	-10.8	41.5	100.0	69.7	63.0
Noble	1.1	-2.1	-11.3	4.8	-33.3	32.2	44.0
Wabash	-6.7	14.8	-5.2	-2.8	-50.0	72.6	43.9
Wells	-0.9	113.3	43.4	81.4	-62.5	73.3	36.3
Whitley	7.5	73.7	-16.4	90.9	-46.2	45.1	114.8
Total Five Counties	1.1	11.3	1.2	100.5	28.8	51.3	72.2

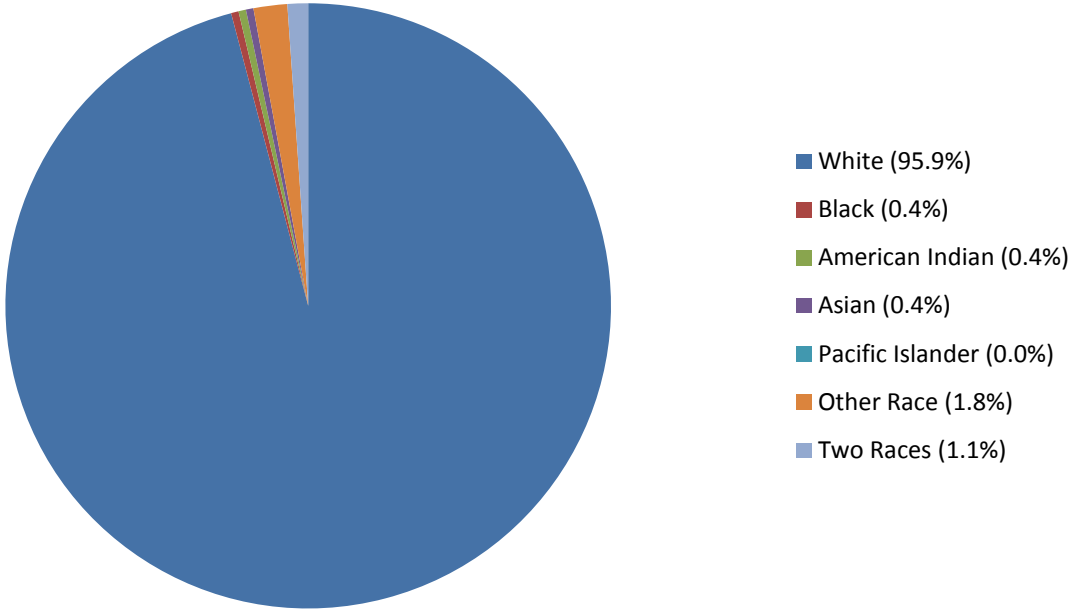
Source: U.S. Census Bureau

Table 9. Percentage Distribution in 2010

	White	Black or African American	American Indian and Alaskan Native	Asian	Native Hawaiian and Other Pacific Islander	Some Other Race	Two or More Races
Huntington	97.1	0.4	0.4	0.4	0.0	0.5	1.1
Noble	92.5	0.4	0.2	0.4	0.0	5.2	1.3
Wabash	96.6	0.5	0.7	0.4	0.0	0.7	1.1
Wells	97.3	0.3	0.3	0.4	0.0	0.8	0.9
Whitley	97.6	0.3	0.3	0.3	0.0	0.4	1.1
Total Five Counties	95.9	0.4	0.4	0.4	0.0	1.8	1.1
Indiana	84.3%	9.1%	0.3%	1.6%	0.0%	2.7%	2.0%

Source: U.S. Census Bureau

Figure 2. Five Counties Percentage Distribution in 2010



Source: U.S. Census Bureau

ETHNICITY

Table 10. Numbers in 2000

	Hispanic or Latino (of any race)	Not Hispanic or Latino
Huntington	363	37,712
Noble	3,299	42,976
Wabash	414	34,546
Wells	397	27,203
Whitley	276	30,431
Total Five Counties	4,749	172,868

Source: U.S. Census Bureau

Table 11. Numbers in 2010

	Hispanic or Latino (of any race)	Not Hispanic or Latino
Huntington	631	36,493
Noble	4,567	42,969
Wabash	697	32,191
Wells	564	27,072
Whitley	515	32,777
Total Five Counties	6,974	171,502

Source: U.S. Census Bureau

Table 12. Percentage Changes from 2000 to 2010

	Hispanic or Latino (of any race)	Not Hispanic or Latino
Huntington	73.8%	-3.2%
Noble	38.4%	0.0%
Wabash	68.4%	-6.8%
Wells	42.1%	-0.5%
Whitley	86.6%	7.7%
Total Five Counties	46.9%	-0.8%

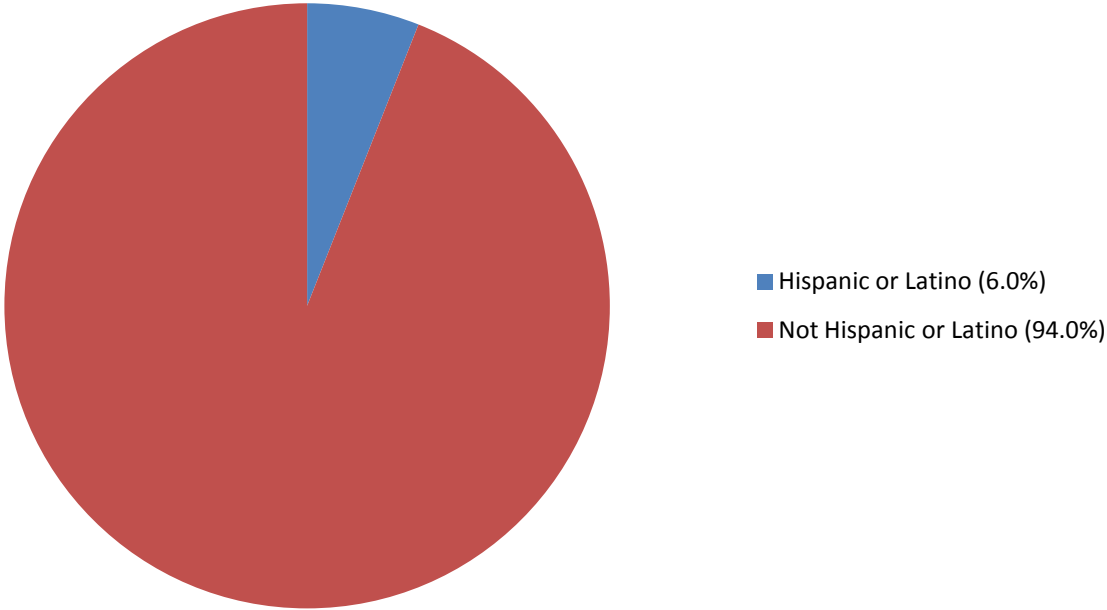
Source: U.S. Census Bureau

Table 13. Percentage Distribution in 2010

	Hispanic or Latino (of any race)	Not Hispanic or Latino
Huntington	1.7%	98.3%
Noble	9.6%	90.4%
Wabash	2.1%	97.9%
Wells	2.0%	98.0%
Whitley	1.5%	98.5%
Total Five Counties	3.9%	96.1%
Indiana	6.0%	94.0%

Source: U.S. Census Bureau

Figure 3. Five Counties Percentage Distribution in 2010



Source: U.S. Census Bureau

GRANDPARENTS

Table 14. Grandparents, 2006-2010

	Number of Grandparents Living with Own Grandchildren Under Age 18	Percentage Living with Grandchildren Who Were Responsible for Their Caretaking
Huntington	670	45.1%
Noble	667	54.6%
Wabash	788	61.8%
Wells	358	52.5%
Whitley	412	47.8%
Indiana	113,658	50.5%
United States	6,449,387	41.0%

*Source: American Community Survey**

*The American Community Survey (ACS) is a relatively new survey conducted by the U.S. Census Bureau. It uses a series of monthly samples to produce annually updated data for the same small areas (census tracts and block groups) formerly surveyed via the decennial census long-form sample. Initially, 5 years of samples will be required to produce these small-area data. Once the Census Bureau has collected 5 years of data, new small-area data will be produced annually. The Census Bureau also will produce 3-year and 1-year data products for larger geographic areas.

HOUSEHOLDS

Table 15. Households, 2006-2010

	Number of Households	Percentage of Nonfamily Households	Percentage Who Were Renting
Huntington	14,224	29.9%	20.3%
Noble	17,498	26.7%	22.6%
Wabash	13,055	30.4%	22.0%
Wells	10,728	27.2%	22.0%
Whitley	13,246	32.1%	16.8%
Indiana	2,465,402	32.8%	28.5%
United States	114,235,996	33.2%	33.4%

Source: American Community Survey

RESIDENCE PATTERNS

Table 16. Residence Patterns, 2006-2010

	Percentage of Population Moving within or to County
Huntington	13.9%
Noble	15.1%
Wabash	14.4%
Wells	14.2%
Whitley	11.6%

Source: American Community Survey

INCOME

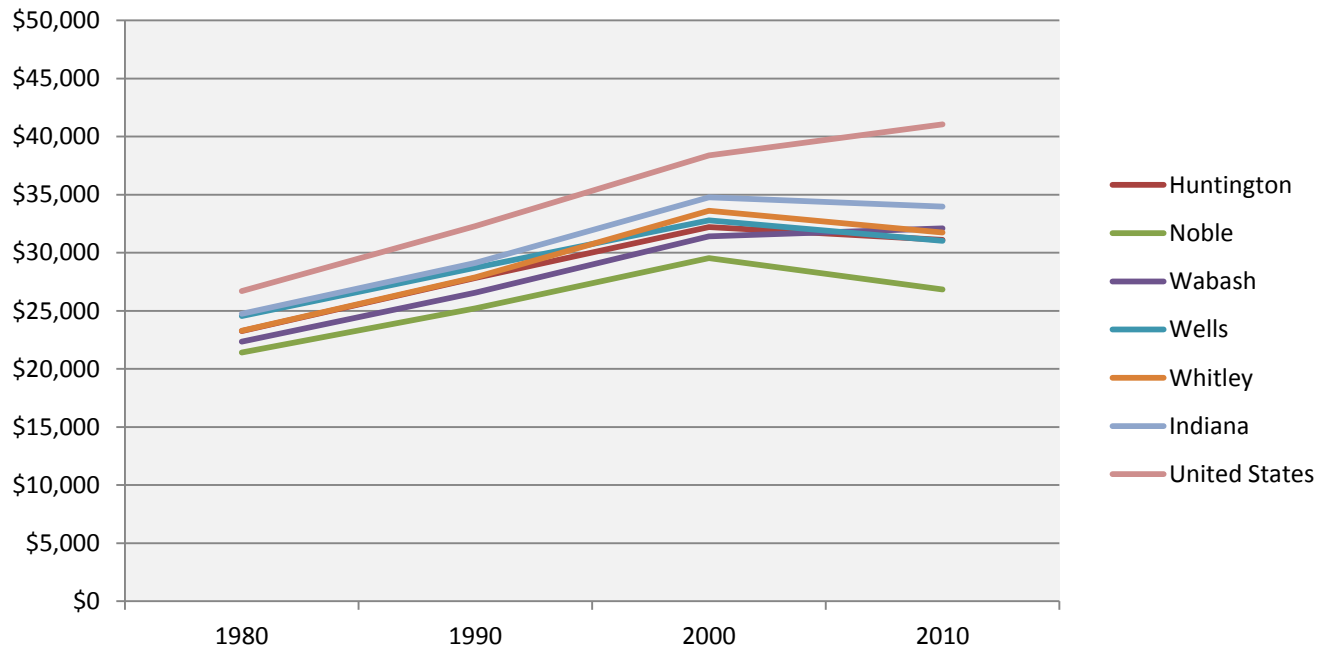
Table 17. Inflation-Adjusted Per Capita Personal Income*, 1980-2010

	1980	1990	2000	2010	Changes from 1980-2010	Changes from 2000-2010
Huntington	\$23,264	\$27,832	\$32,208	\$31,116	+33.8%	-3.4%
Noble	\$21,422	\$25,226	\$29,545	\$26,835	+25.3%	-9.2%
Wabash	\$22,340	\$26,565	\$31,423	\$32,108	+43.7%	+2.2%
Wells	\$24,560	\$28,703	\$32,800	\$31,020	+26.3%	-5.4%
Whitley	\$23,295	\$27,873	\$33,624	\$31,750	+36.3%	-5.6%
Indiana	\$24,751	\$29,120	\$34,771	\$33,981	+37.3%	-2.3%
United States	\$26,704	\$32,290	\$38,393	\$41,047	+53.7%	+6.9%

Source: STATS Indiana

*Per capita personal income is calculated as the personal income of the residents of a given area divided by the resident population of that area.

Figure 4. Inflation-Adjusted Per Capita Personal Income, 1980-2010



Source: STATS Indiana

HOUSEHOLD INCOME

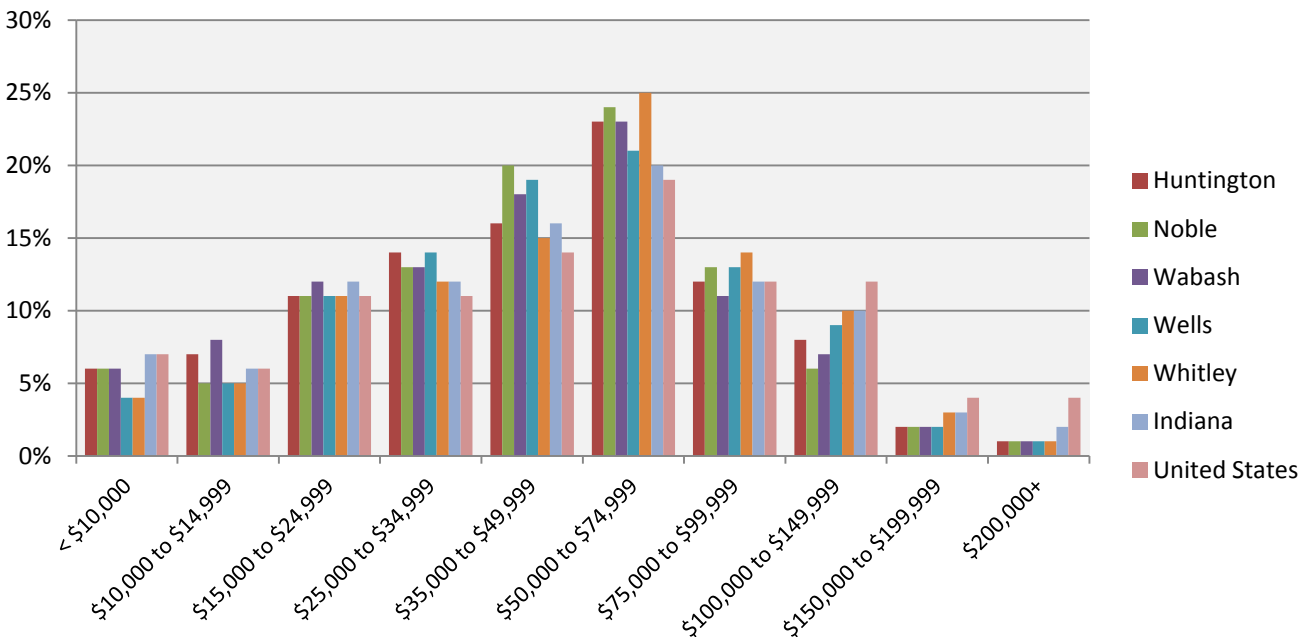
Table 18. Household Income, 2006-2010

	<\$10,000	\$10,000-\$14,999	\$15,000-\$24,999	\$25,000-\$34,999	\$35,000-\$49,999
Huntington	6%	7%	11%	14%	16%
Noble	6%	5%	11%	13%	20%
Wabash	6%	8%	12%	13%	18%
Wells	4%	5%	11%	14%	19%
Whitley	4%	5%	11%	12%	15%
Indiana	7%	6%	12%	12%	16%
United States	7%	6%	11%	11%	14%

	\$50,000-\$74,999	\$75,000-\$99,999	\$100,000-\$149,999	\$150,000-\$199,999	\$200,000+
Huntington	23%	12%	8%	2%	1%
Noble	24%	13%	6%	2%	1%
Wabash	23%	11%	7%	2%	1%
Wells	21%	13%	9%	2%	1%
Whitley	25%	14%	10%	3%	1%
Indiana	20%	12%	10%	3%	2%
United States	19%	12%	12%	4%	4%

Source: American Community Survey

Figure 5. Household Income, 2006-2010



Source: American Community Survey

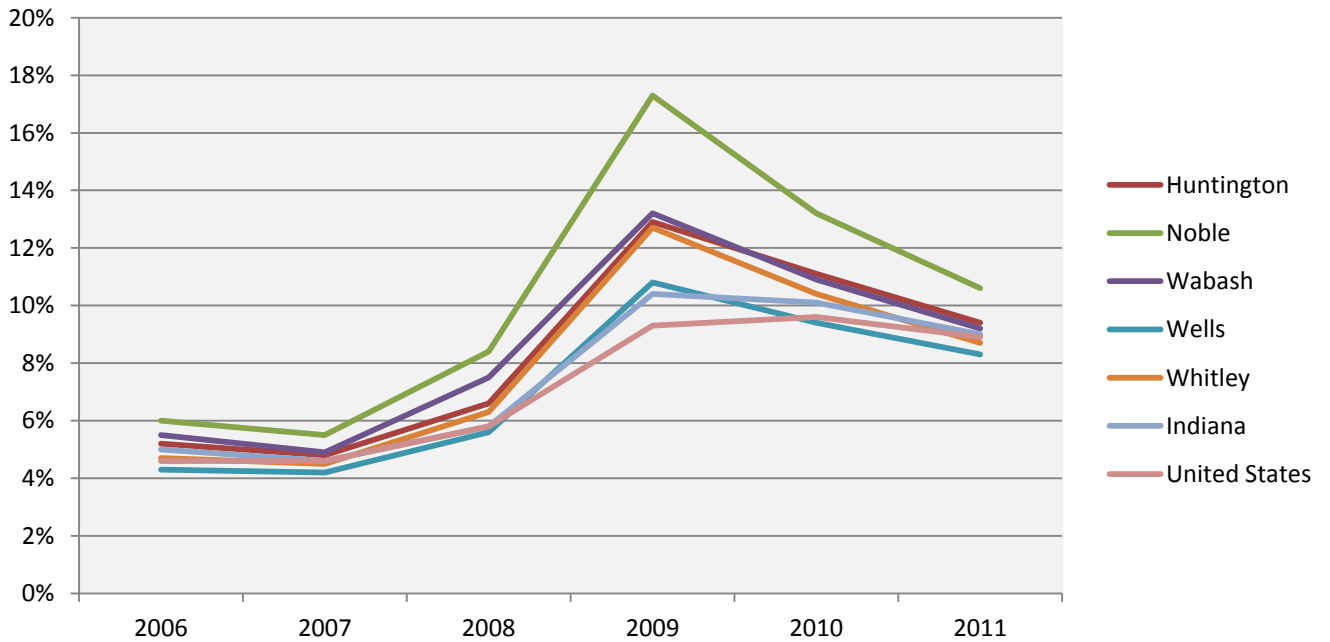
EMPLOYMENT

Table 19. Five Counties, Indiana, and U.S. Unemployment Rates, 2006-2011
(Not Seasonally Adjusted, Annual Average)

	2006	2007	2008	2009	2010	2011	2011 Rank
Huntington	5.2%	4.8%	6.6%	12.9%	11.1%	9.4%	38 th
Noble	6.0%	5.5%	8.4%	17.3%	13.2%	10.6%	14 th
Wabash	5.5%	4.9%	7.5%	13.2%	10.9%	9.2%	43 rd
Wells	4.3%	4.2%	5.6%	10.8%	9.4%	8.3%	64 th
Whitley	4.7%	4.5%	6.3%	12.7%	10.4%	8.7%	56 th
Indiana	5.0%	4.6%	5.8%	10.4%	10.1%	9.0%	NA
United States	4.6%	4.6%	5.8%	9.3%	9.6%	8.9%	NA

Source: STATS Indiana

Figure 6. Five Counties, Indiana, and U.S. Unemployment Rates, 2006-2011
(Not Seasonally Adjusted, Annual Average)



Source: STATS Indiana

OCCUPATION

Table 20. Civilian Employed Population 16 Years and Over, 2006-2010

	Agriculture, Forestry, Fishing and Hunting, and Mining
Huntington	1.2%
Noble	3.3%
Wabash	4.3%
Wells	3.5%
Whitley	2.9%
Indiana	1.4%
United States	1.9%

Source: American Community Survey

COMMUTE

Table 21. Worked Outside County of Residence, 2006-2010

	Worked Outside County of Residence
Huntington	35.5%
Noble	41.2%
Wabash	30.0%
Wells	41.8%
Whitley	53.9%

Source: American Community Survey

DISABILITY

Table 22. Civilian Population 16 to 64 Years of Age, 2005-2007

	Percent Disabled	Percent of Disabled Who Are Employed	Percent of Disabled Who Are Not Employed
Huntington	11.1%	41.3%	58.7%
Noble	14.6%	39.7%	60.3%
Wabash	14.2%	32.9%	67.1%
Wells	11.9%	46.6%	53.4%
Whitley	10.3%	45.4%	54.6%
Indiana	12.8%	38.1%	61.9%
United States	12.3%	36.7%	63.3%

Source: American Community Survey

POVERTY

Table 23. Percentage of Individuals (All Ages) Living in Poverty, 2006-2010

	2000	2010	Percentage Point Change
Huntington	5.5%	11.4%	+5.9
Noble	7.9%	11.4%	+3.5
Wabash	6.9%	11.6%	+4.7
Wells	5.9%	8.0%	+2.1
Whitley	4.9%	6.8%	+1.9
Indiana	9.5%	13.5%	+4.0
United States	12.4%	13.8%	+1.4

Source: American Community Survey

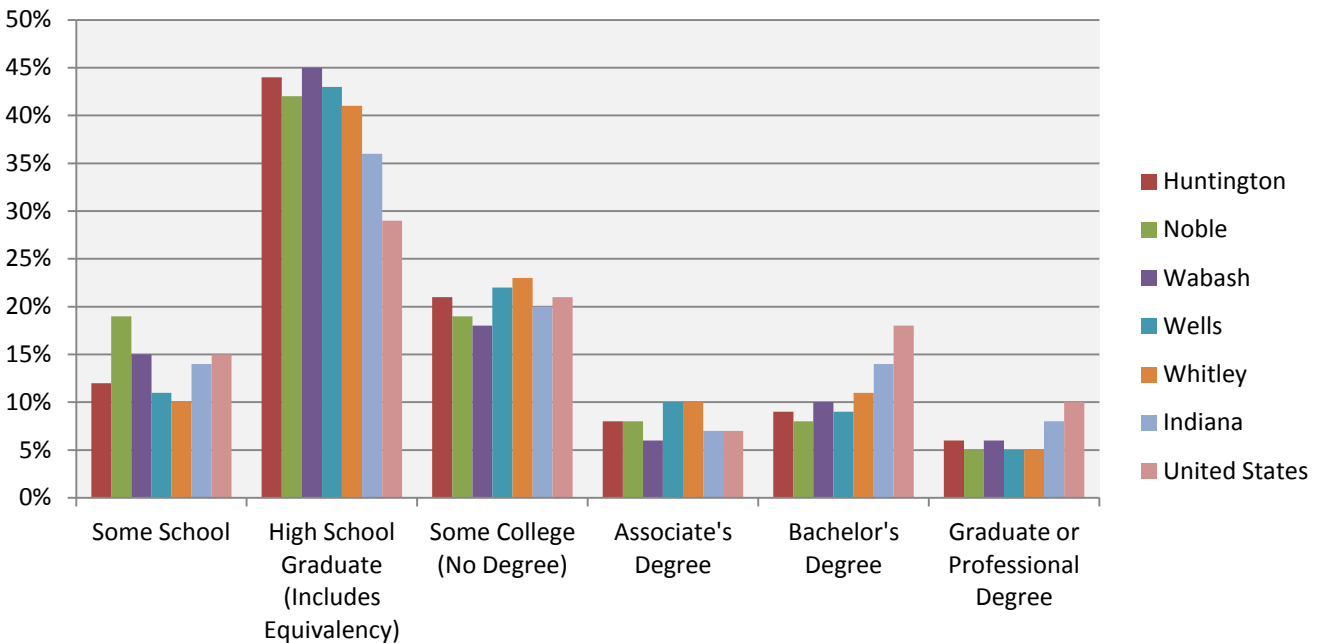
EDUCATION

Table 24. Educational Attainment, 2006-2010

	Some School	High School Graduate (Includes Equivalency)	Some College (No Degree)	Associate's Degree	Bachelor's Degree	Graduate or Professional Degree
Huntington	12%	44%	21%	8%	9%	6%
Noble	19%	42%	19%	8%	8%	5%
Wabash	15%	45%	18%	6%	10%	6%
Wells	11%	43%	22%	10%	9%	5%
Whitley	10%	41%	23%	10%	11%	5%
Indiana	14%	36%	20%	7%	14%	8%
United States	15%	29%	21%	7%	18%	10%

Source: American Community Survey

Figure 7. Educational Attainment, 2006-2010



Source: American Community Survey

COUNTY HEALTH PROFILE

COUNTY HEALTH RANKINGS

HEALTH OUTCOMES

Table 25. Health Outcomes Rankings, 2010-2014

	2010	2011	2012	2013	2014
Huntington	29 th	21 st	24 th	26 th	26 th
Mortality	15 th	11 th	8 th	18 th	18 th
Morbidity	49 th	50 th	54 th	41 st	40 th
Noble	37 th	37 th	30 th	28 th	33 rd
Mortality	45 th	43 rd	32 nd	30 th	30 th
Morbidity	32 nd	31 st	34 th	31 st	36 th
Wabash	49 th	52 nd	57 th	66 th	61 st
Mortality	56 th	57 th	64 th	69 th	69 th
Morbidity	42 nd	49 th	47 th	55 th	45 th
Wells	10 th	8 th	8 th	6 th	7 th
Mortality	7 th	7 th	6 th	2 nd	2 nd
Morbidity	21 st	23 rd	30 th	25 th	27 th
Whitley	7 th	9 th	15 th	9 th	9 th
Mortality	6 th	13 th	17 th	9 th	9 th
Morbidity	12 th	10 th	13 th	17 th	17 th

Source: County Health Rankings

HEALTH FACTORS

Table 26. Health Factors Rankings, 2010-2014

	2010	2011	2012	2013	2014
Huntington	47 th	49 th	42 nd	51 st	40 th
Health Behaviors	71 st	82 nd	81 st	81 st	59 th
Clinical Care	16 th	21 st	26 th	38 th	44 th
Social and Economic Factors	45 th	48 th	32 nd	39 th	29 th
Physical Environment	81 st	31 st	26 th	20 th	13 th
Noble	73 rd	81 st	76 th	70 th	68 th
Health Behaviors	69 th	49 th	46 th	67 th	64 th
Clinical Care	74 th	84 th	73 rd	76 th	87 th
Social and Economic Factors	66 th	77 th	79 th	61 st	60 th
Physical Environment	59 th	64 th	44 th	23 rd	4 th
Wabash	31 st	50 th	40 th	35 th	27 th
Health Behaviors	67 th	76 th	67 th	50 th	42 nd
Clinical Care	5 th	12 th	23 rd	13 th	9 th
Social and Economic Factors	48 th	55 th	48 th	51 st	46 th
Physical Environment	57 th	66 th	52 nd	45 th	9 th
Wells	8 th	9 th	11 th	11 th	9 th
Health Behaviors	15 th	12 th	13 th	16 th	6 th
Clinical Care	8 th	11 th	12 th	21 st	27 th
Social and Economic Factors	12 th	13 th	14 th	11 th	13 th
Physical Environment	58 th	84 th	75 th	48 th	17 th
Whitley	11 th	14 th	17 th	15 th	13 th
Health Behaviors	36 th	25 th	30 th	39 th	24 th
Clinical Care	24 th	24 th	34 th	32 nd	17 th
Social and Economic Factors	9 th	18 th	13 th	9 th	8 th
Physical Environment	40 th	36 th	67 th	9 th	78 th

Source: County Health Rankings

CAUSES of DEATH

ALL CAUSES of DEATH

Table 27. Total Deaths

	Total Deaths
Huntington	
Age-Adjusted Rate	855.33
Number	385
Noble	
Age-Adjusted Rate	830.95
Number	413
Wabash	
Age-Adjusted Rate	856.82
Number	415
Wells	
Age-Adjusted Rate	758.73
Number	273
Whitley	
Age-Adjusted Rate	778.00
Number	304
Indiana	
Age-Adjusted Rate	816.22
Number	56,635

Source: Indiana State Department of Health, Epidemiology Resource Center

TOP TEN LEADING CAUSES of DEATH

Table 28. Rankings, Death Rates and Numbers, 2010

	Major Cardiovascular Diseases	Cancer	All Other Diseases (see Appendix A)	Chronic Lower Respiratory Diseases	Alzheimer's Disease
Huntington	1 st	2 nd	3 rd	4 th	10 th
Age-Adjusted Rates	277.38	212.50	131.75	52.12	U
Numbers	127	94	61	25	5
Noble	1 st	2 nd	3 rd	4 th	5 th
Age-Adjusted Rates	224.53	183.86	138.67	80.15	60.16
Numbers	112	92	69	40	29
Wabash	1 st	2 nd	3 rd	4 th	6 th
Age-Adjusted Rates	240.17	173.87	143.91	64.28	43.59
Numbers	125	79	76	31	25
Wells	1 st	2 nd	3 rd	4 th	9 th
Age-Adjusted Rates	246.01	172.52	128.64	U	U
Numbers	91	59	49	14	5
Whitley	1 st	2 nd	3 rd	4 th	5 th
Age-Adjusted Rates	240.26	190.69	104.73	55.75	U
Numbers	94	76	42	22	12
Indiana	1 st	2 nd	3 rd	4 th	5 th
Age-Adjusted Rates	253.12	187.62	141.67	55.19	27.64
Numbers	17,705	13,139	9,833	3,795	1,937

	All Other Accidents and Effects	Kidney Disease	Diabetes	Influenza and Pneumonia	Intentional Self-Harm (Suicide)
Huntington	6 th	7 th	9 th	5 th	
Age-Adjusted Rates	U	U	U	U	
Numbers	12	12	11	13	
Noble	7 th	6 th	8 th		9 th
Age-Adjusted Rates	U	U	U		U
Numbers	11	19	8		8
Wabash	5 th	7 th	8 th	9 th	
Age-Adjusted Rates	71.57	U	U	U	
Numbers	26	13	10	8	
Wells	7 th	10 th	8 th	5 th	
Age-Adjusted Rates	U	U	U	U	
Numbers	10	-	7	12	
Whitley	10 th	8 th	7 th	6 th	
Age-Adjusted Rates	U	U	U	U	
Numbers	6	8	10	11	
Indiana	6 th	8 th	7 th	9 th	10 th
Age-Adjusted Rates	27.13	21.82	22.67	16.72	13.09
Numbers	1,802	1,513	1,590	1,170	867

Source: Indiana State Department of Health, Epidemiology Resource Center

- Numbers less than 5, including 0, have been suppressed to protect confidentiality.
- U The rate is unstable when there are fewer than 20 deaths.

TOP THREE CARDIOVASCULAR DISEASES

Table 29. Death Rates and Numbers, 2010

	Ischemic Heart Diseases	Other Diseases of the Heart	Stroke
Huntington			
Age-Adjusted Rates	121.84	70.43	55.92
Numbers	55	33	26
Noble			
Age-Adjusted Rates	114.05	60.61	U
Numbers	57	30	19
Wabash			
Age-Adjusted Rates	123.85	57.31	42.12
Numbers	61	29	25
Wells			
Age-Adjusted Rates	122.81	63.88	U
Numbers	45	24	18
Whitley			
Age-Adjusted Rates	100.94	79.19	U
Numbers	39	31	14
Indiana			
Age-Adjusted Rates	115.41	67.68	44.27
Numbers	8,096	4,730	3,077

Source: Indiana State Department of Health, Epidemiology Resource Center

- Numbers less than 5, including 0, have been suppressed to protect confidentiality.
- U The rate is unstable when there are fewer than 20 deaths.

TOP FOUR CANCERS

Table 30. Death Rates and Numbers, 2010

	Lung	Other Malignant Neoplasms	Colon and Rectal	Breast
Huntington				
Age-Adjusted Rates	47.55	56.88	U	U
Numbers	21	25	8	8
Noble				
Age-Adjusted Rates	52.35	57.71	U	U
Numbers	26	29	8	-
Wabash				
Age-Adjusted Rates	U	67.52	U	U
Numbers	12	29	7	5
Wells				
Age-Adjusted Rates	U	U	U	U
Numbers	18	15	7	-
Whitley				
Age-Adjusted Rates	55.50	U	U	U
Numbers	22	15	6	5
Indiana				
Age-Adjusted Rates	58.32	45.56	16.08	12.77
Numbers	4,089	3,203	1,133	896

Source: Indiana State Department of Health, Epidemiology Resource Center

- Numbers less than 5, including 0, have been suppressed to protect confidentiality.
- U The rate is unstable when there are fewer than 20 deaths.

RISK FACTORS

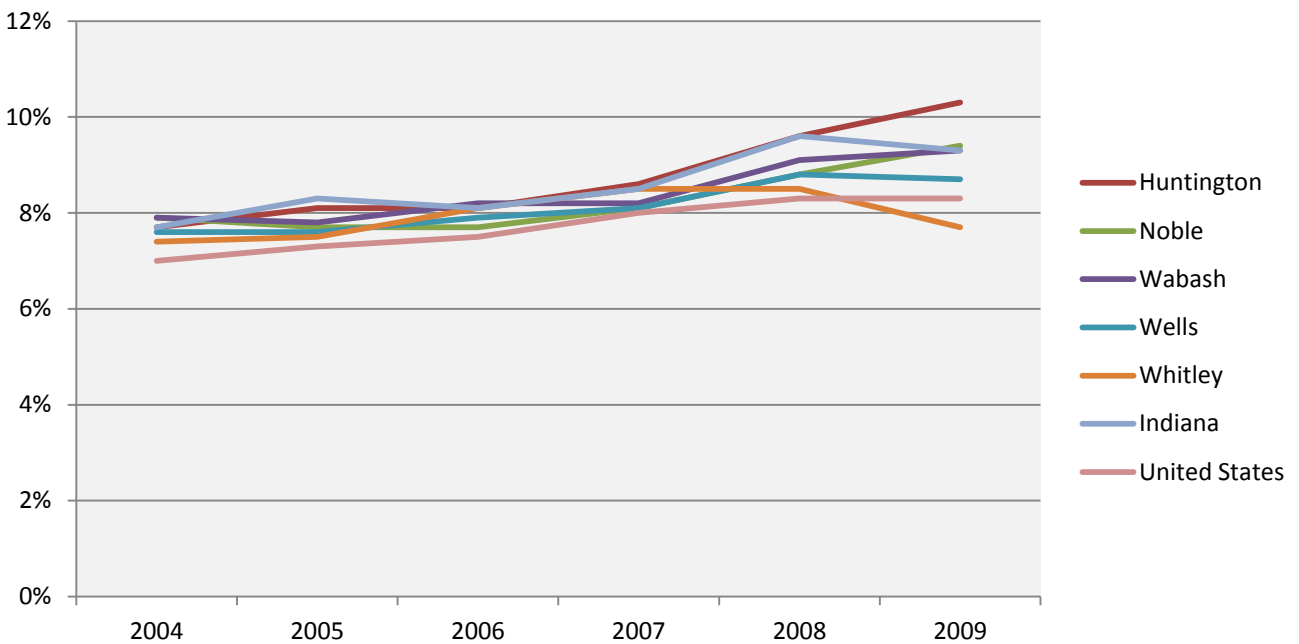
DIABETES

Table 31. Age-Adjusted Estimates of the Percentage of Adults ≥ 20 Years Old with Diagnosed Diabetes, 2004-2009

	2004	2005	2006	2007	2008	2009
Huntington	7.7%	8.1%	8.1%	8.6%	9.6%	10.3%
Noble	7.9%	7.7%	7.7%	8.1%	8.8%	9.4%
Wabash	7.9%	7.8%	8.2%	8.2%	9.1%	9.3%
Wells	7.6%	7.6%	7.9%	8.1%	8.8%	8.7%
Whitley	7.4%	7.5%	8.1%	8.5%	8.5%	7.7%
Indiana	7.7%	8.3%	8.1%	8.5%	9.6%	9.3%
United States	7.0%	7.3%	7.5%	8.0%	8.3%	8.3%

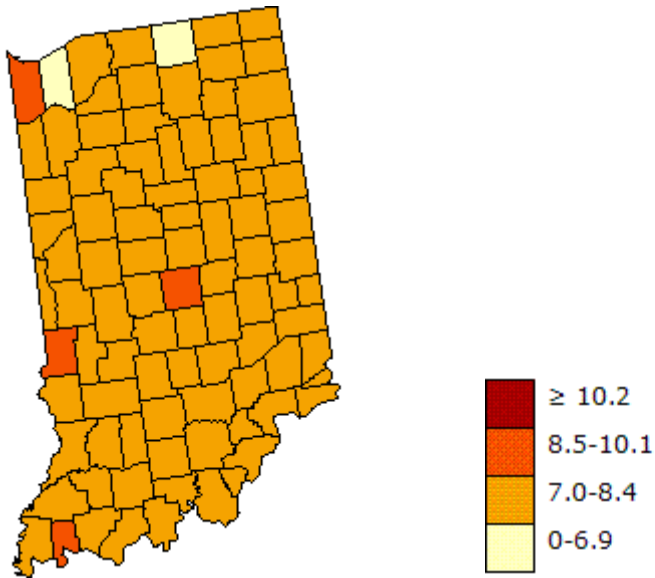
Source: Centers for Disease Control and Prevention

Figure 8. Age-Adjusted Estimates of the Percentage of Adults ≥ 20 Years Old with Diagnosed Diabetes, 2004-2009



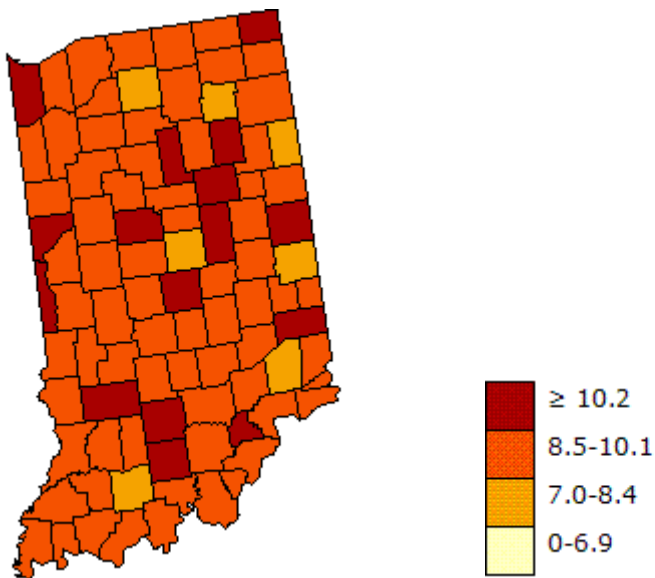
Source: Centers for Disease Control and Prevention

Figure 9. Age-Adjusted Estimates of the Percentage of Adults with Diagnosed Diabetes in Indiana, 2004



Source: Centers for Disease Control and Prevention

Figure 10. Age-Adjusted Estimates of the Percentage of Adults with Diagnosed Diabetes in Indiana, 2009



Source: Centers for Disease Control and Prevention

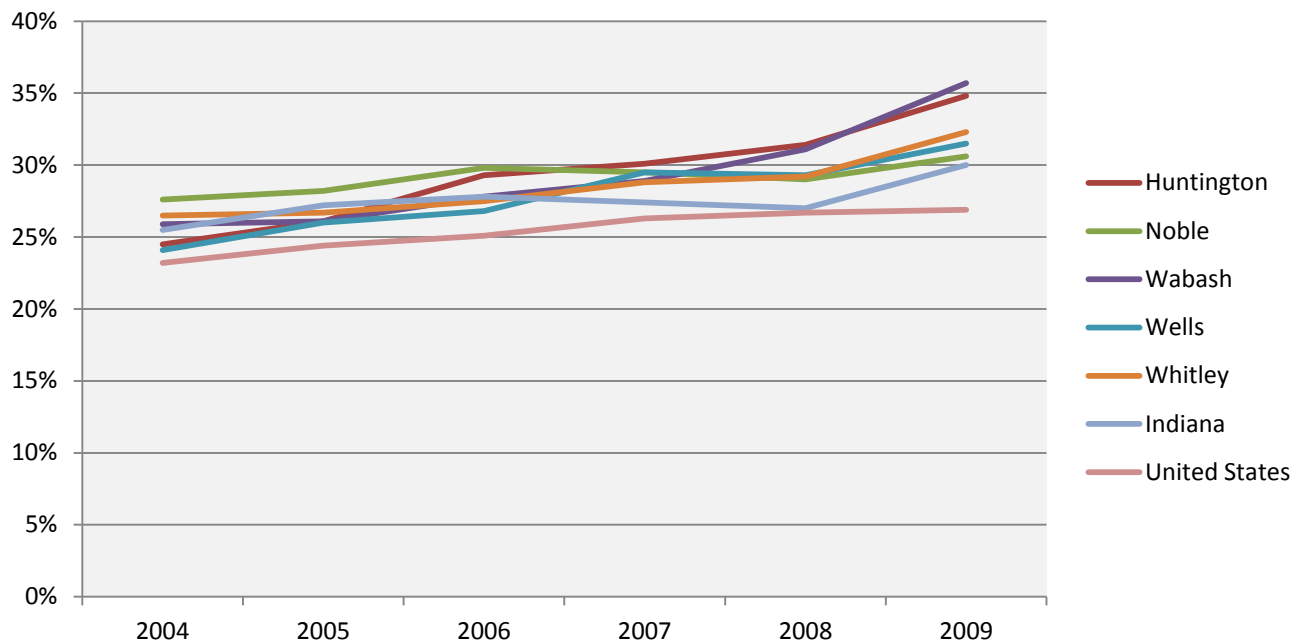
OBESITY

Table 32. Age-Adjusted Estimates of the Percentage of Adults ≥ 20 Years Old Who Are Obese, 2004-2009

	2004	2005	2006	2007	2008	2009
Huntington	24.5%	26.1%	29.3%	30.1%	31.4%	34.8%
Noble	27.6%	28.2%	29.8%	29.5%	29.0%	30.6%
Wabash	25.9%	26.1%	27.8%	28.9%	31.1%	35.7%
Wells	24.1%	26.0%	26.8%	29.5%	29.3%	31.5%
Whitley	26.5%	26.7%	27.5%	28.8%	29.2%	32.3%
Indiana	25.5%	27.2%	27.8%	27.4%	27.0%	30.0%
United States	23.2%	24.4%	25.1%	26.3%	26.7%	26.9%

Source: Centers for Disease Control and Prevention

Figure 11. Age-Adjusted Estimates of the Percentage of Adults ≥ 20 Years Old Who Are Obese, 2004-2009



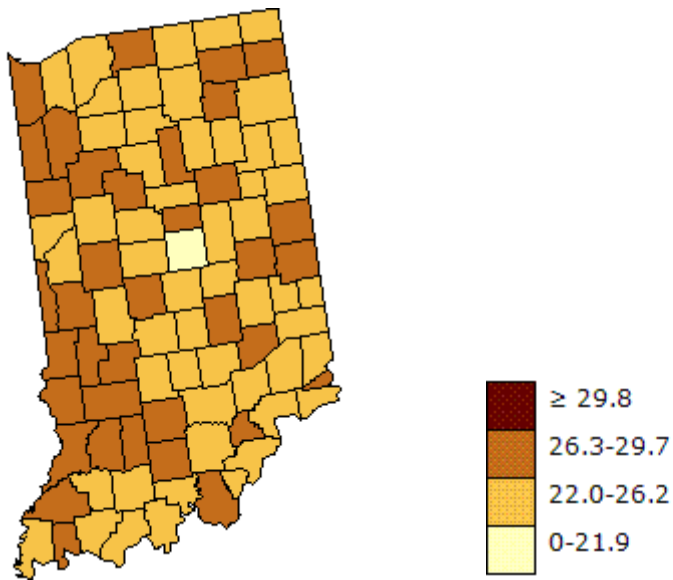
Source: Centers for Disease Control and Prevention

Table 33. BMI

BMI	Weight Status
Below 18.5	Underweight
18.5 – 24.9	Normal
25.0 – 29.9	Overweight
30.0 and Above	Obese

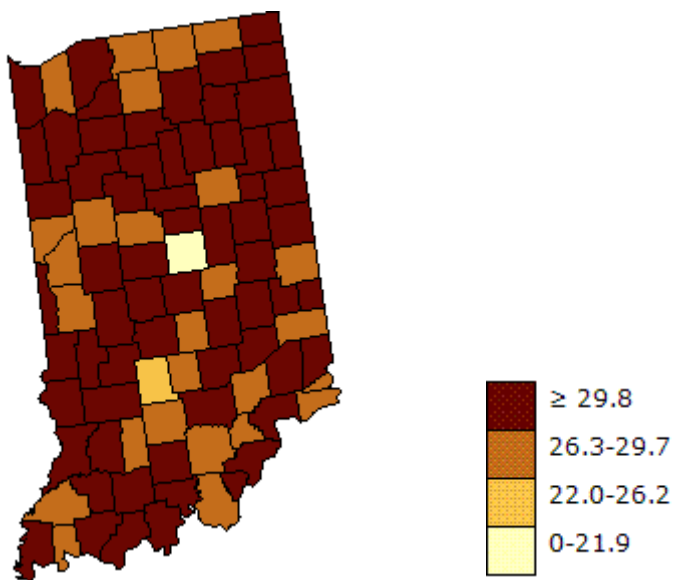
Source: CDC

Figure 12. Age-Adjusted Estimates of the Percentage of Adults Who Are Obese in Indiana, 2004



Source: Centers for Disease Control and Prevention

Figure 13. Age-Adjusted Estimates of the Percentage of Adults Who Are Obese in Indiana, 2009



Source: Centers for Disease Control and Prevention

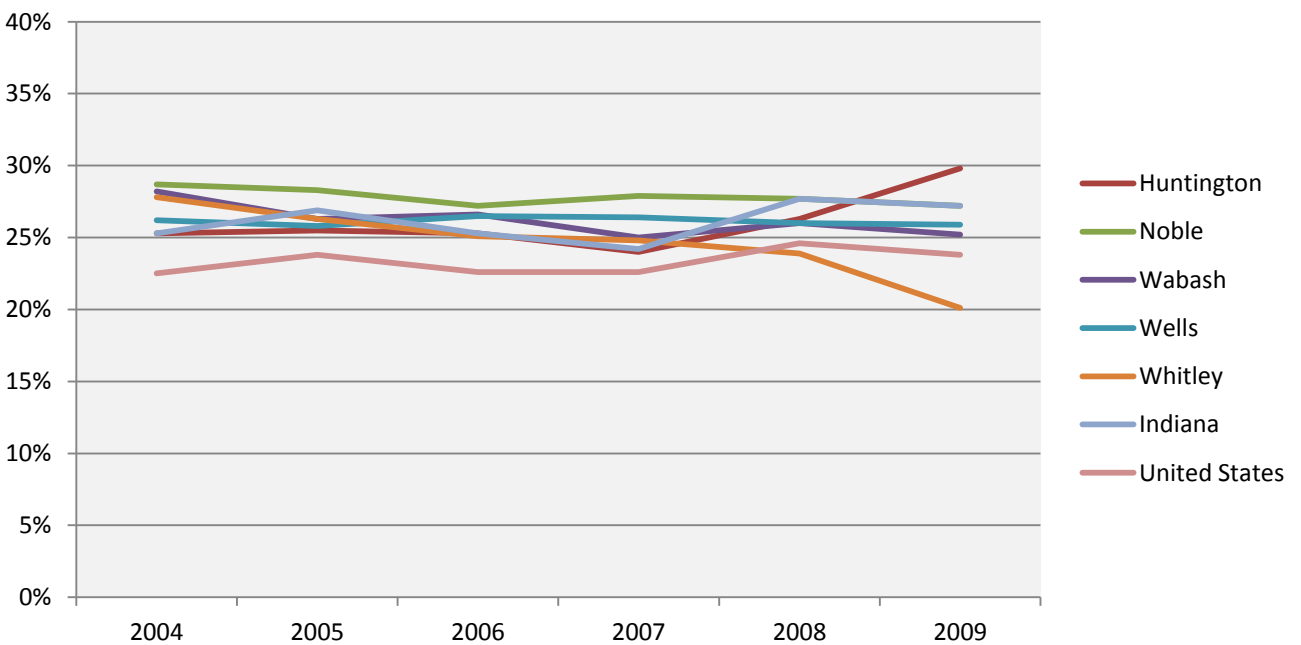
PHYSICAL INACTIVITY

Table 34. Age-Adjusted Estimates of the Percentage of Adults ≥ 20 Years Old Who Are Physically Inactive, 2004-2009

	2004	2005	2006	2007	2008	2009
Huntington	25.3%	25.5%	25.3%	24.0%	26.3%	29.8%
Noble	28.7%	28.3%	27.2%	27.9%	27.7%	27.2%
Wabash	28.2%	26.3%	26.6%	25.0%	26.0%	25.2%
Wells	26.2%	25.8%	26.5%	26.4%	26.0%	25.9%
Whitley	27.8%	26.3%	25.1%	24.8%	23.9%	20.1%
Indiana	25.3%	26.9%	25.3%	24.2%	27.7%	27.2%
United States	22.5%	23.8%	22.6%	22.6%	24.6%	23.8%

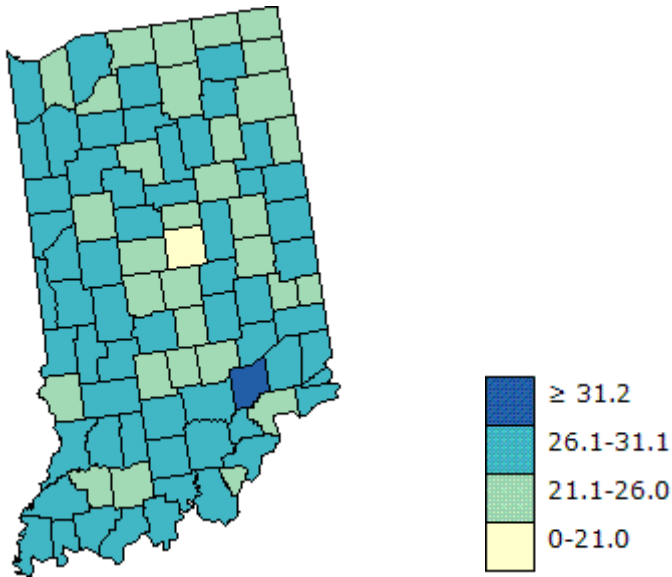
Source: Centers for Disease Control and Prevention

Figure 14. Age-Adjusted Estimates of the Percentage of Adults ≥ 20 Years Old Who Are Physically Inactive, 2004-2009



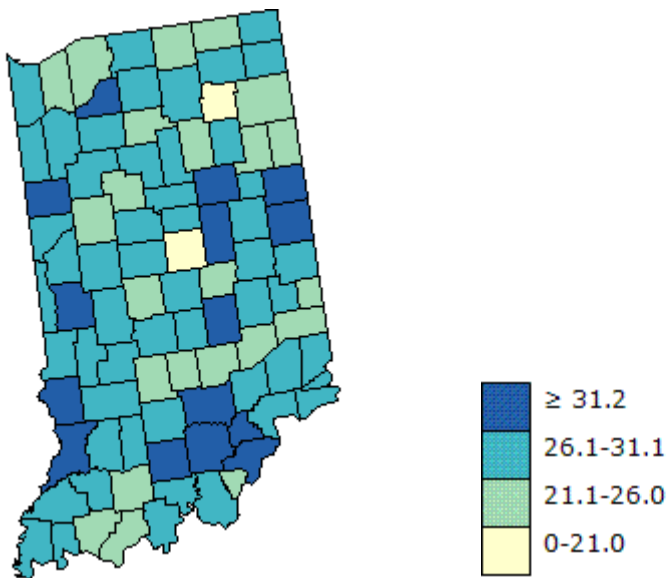
Source: Centers for Disease Control and Prevention

Figure 15. Age-Adjusted Estimates of the Percentage of Adults Who Are Physically Inactive in Indiana, 2004



Source: Centers for Disease Control and Prevention

Figure 16. Age-Adjusted Estimates of the Percentage of Adults Who Are Physically Inactive in Indiana, 2009



Source: Centers for Disease Control and Prevention

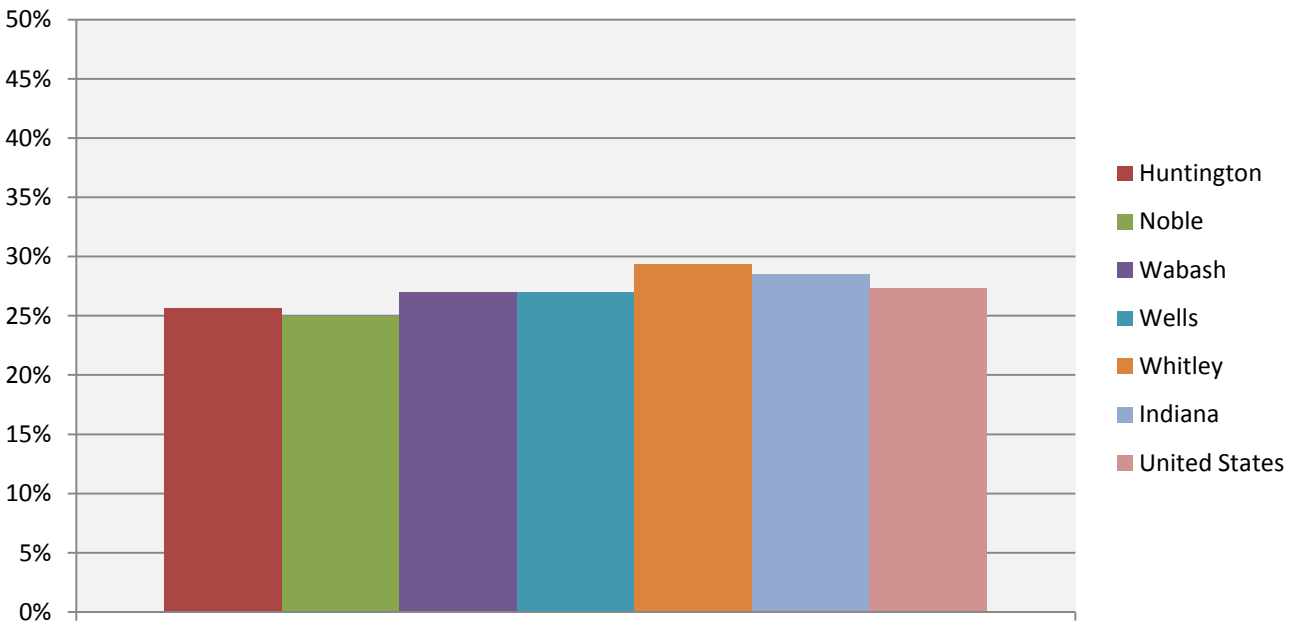
HYPERTENSION

Table 35. Percentage of Adults with Hypertension, 2005-2009

	Percentage of Adults with Hypertension
Huntington	25.6%
Noble	24.9%
Wabash	27.0%
Wells	27.0%
Whitley	29.3%
Indiana	28.5%
United States	27.3%

Source: Centers for Disease Control and Prevention (BRFSS) & Health Indicators Warehouse

Figure 17. Percentage of Adults with Hypertension, 2005-2009



Source: Centers for Disease Control and Prevention (BRFSS) & Health Indicators Warehouse

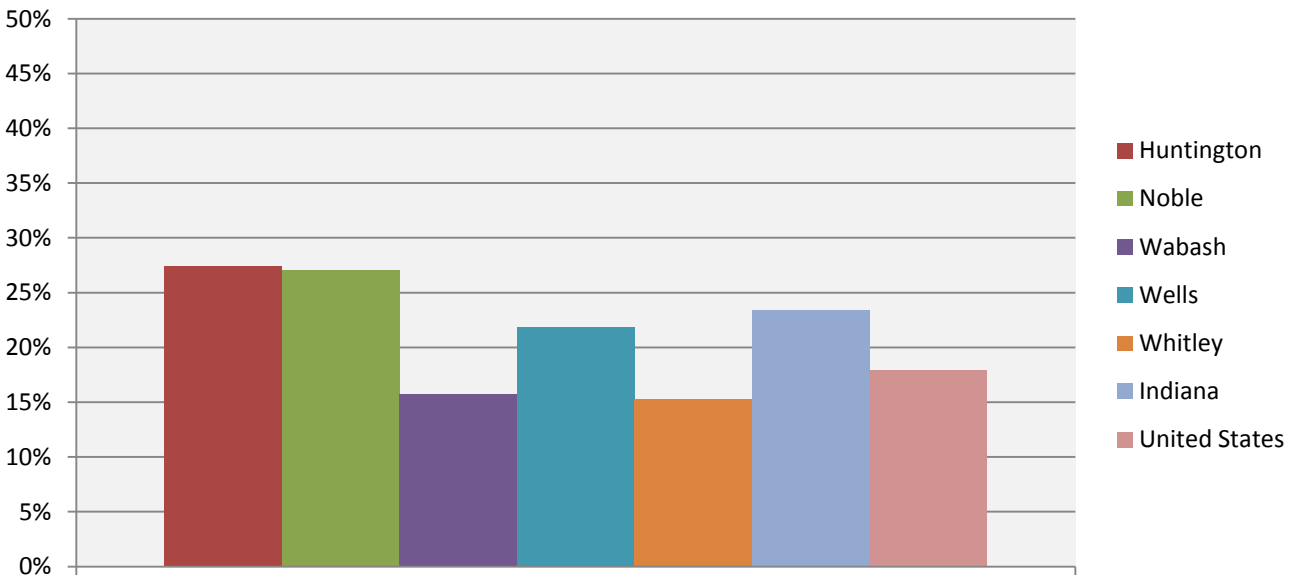
SMOKING

Table 36. Percentage of Adults Who Smoke, 2008-2010

	Percentage of Adults Who Smoke
Huntington	27.4%
Noble	27.1%
Wabash	15.7%
Wells	21.9%
Whitley	15.3%
Indiana	23.4%
United States	17.9%

Source: Centers for Disease Control and Prevention (BRFSS) & Health Indicators Warehouse

Figure 18. Percentage of Adults Who Smoke, 2008-2010



Source: Centers for Disease Control and Prevention (BRFSS) & Health Indicators Warehouse

TOBACCO-FREE POLICIES

Huntington County

Hospitals and Health Care Facilities:

- Parkview Huntington
- Bowen Center

Colleges and Universities:

- Huntington University

Noble County

Hospitals and Health Care Facilities:

- Parkview Noble
- Bowen Center

School Districts:

- Central Noble School Corporation
- East Noble School Corporation

Wabash County

Hospitals and Health Care Facilities:

- Wabash County Hospital
- Timbercrest Senior Living
- Peabody Healthcare
- Bowen Center

School Districts:

- MSD Wabash County School
- Manchester Community School
- Wabash City School

Wells County

Hospitals and Health Care Facilities:

- Bluffton Regional Medical Center

School Districts:

- MSD Bluffton-Harrison

Whitley County

Hospitals and Health Care Facilities:

- Parkview Whitley
- Bowen Center

School Districts:

- Whitley County Consolidated School

POOR MENTAL HEALTH

Table 37. Number of Unhealthy Days Per Month, 2012

	Number of Unhealthy Days Per Month
Huntington	3.4
Noble	3.0
Wabash	2.8
Wells	3.5
Whitley	2.3
Indiana	3.6

Source: County Health Rankings

SUBSTANCE ABUSE

Table 38. Tobacco, 2009-2010

	Outlets Per 1,000 People	Outlets Per 1,000 Youth 10-17 Years Old	Annual Spending Per Household on Tobacco
Huntington	0.99	9.18	\$341
Noble	0.74	6.33	\$332
Wabash	0.87	8.62	\$326
Wells	0.75	6.96	\$336
Whitley	0.73	6.81	\$344
Indiana	0.77	7.06	\$324
United States	NA	NA	\$343

Source: Indiana Prevention Resource Center

Table 39. Alcohol, 2009-2010

	Licenses Per 1,000 18-20 Year Olds	Rank Licenses Per 1,000 18-20 Year Olds	Annual Spending Per Household on Alcohol
Huntington	78.41	11 th	\$575
Noble	51.82	56 th	\$557
Wabash	57.9	39 th	\$542
Wells	31.05	89 th	\$569
Whitley	51.92	54 th	\$598
Indiana	51.68	NA	\$578
United States	NA	NA	\$642

Source: Indiana Prevention Resource Center

Table 40. Clandestine Meth Lab Seizures, 2000-2010

	2000	2001	2002	2003	2004	2005	2006	2007	2008	2009	2010
Huntington	0	0	1	0	1	0	4	0	2	4	5
Noble	1	16	7	28	69	47	24	33	80	74	74
Wabash	0	1	2	4	10	10	6	5	5	14	11
Wells	0	0	0	0	1	0	0	0	0	2	0
Whitley	0	0	0	4	2	8	5	2	0	4	7
Indiana	374	690	999	1,260	1,549	1,303	999	825	1,059	1,364	1,395

Source: Indiana Prevention Resource Center

ARRESTS

Table 41. Arrests, 2008

	Driving Any Vehicle While Drunk or Under the Influence of Liquor or Narcotics	Unlawful Possession, Sale, Use, Growing, and Manufacturing of Marijuana	Nonsupport, Neglect, Desertion, or Abuse of Family and Children
Huntington	184	48	18
Noble	258	138	16
Wabash	131	34	6
Wells	52	32	13
Whitley	122	60	9

Source: Indiana Prevention Resource Center

PERSONAL SAFETY

Table 42. Crime Risk Indices*, 2009-2010

	Total Crime Index	Murder	Rape	Robbery	Assault	Burglary	Larceny	Motor Vehicle Theft
Huntington	54	37	38	13	100	50	69	19
Noble	36	16	37	10	40	45	49	24
Wabash	39	41	48	8	31	37	51	28
Wells	29	21	22	11	15	42	52	19
Whitley	11	42	8	4	7	7	4	4
Indiana	93	96	88	72	63	93	102	80
United States	100	100	100	100	100	100	100	100

Source: Indiana Prevention Resource Center

*The Crime Risk Index describes the risk of various types of crime in a given geographic area (e.g., city or state) by comparing the rate of crime in that location to the rate of crime in the nation as a whole. The crime rate for the U.S. is set to 100 for all crimes. Hence a rate of 200 means that the risk of crime in that place is twice as high as for the nation as a whole. (Think of these numbers not as counts of criminal incidents, but as degrees of risk.)

MATERNAL and CHILD HEALTH

Table 43. Number of Fetal Deaths, 2005-2009

	2005	2006	2007	2008	2009
Huntington	1	4	4	4	3
Noble	6	3	5	4	2
Wabash	2	3	2	4	0
Wells	2	4	1	2	0
Whitley	2	5	1	2	4
Indiana	475	569	526	511	457

Source: Indiana State Department of Health, Epidemiology Resource Center

Table 44. Number of Infant Deaths (birth - <1 year), 2005-2009

	2005	2006	2007	2008	2009
Huntington	3	1	1	1	2
Noble	6	2	6	7	4
Wabash	3	1	3	1	0
Wells	2	1	0	1	0
Whitley	4	2	2	0	2
Indiana	699	702	677	616	675

Source: Indiana State Department of Health, Epidemiology Resource Center

Table 45. Number of Neonatal Deaths (birth - <28 days), 2005-2009

	2005	2006	2007	2008	2009
Huntington	1	1	1	1	2
Noble	2	2	1	5	1
Wabash	1	1	1	0	0
Wells	2	1	0	0	0
Whitley	3	1	1	0	2
Indiana	475	433	428	387	428

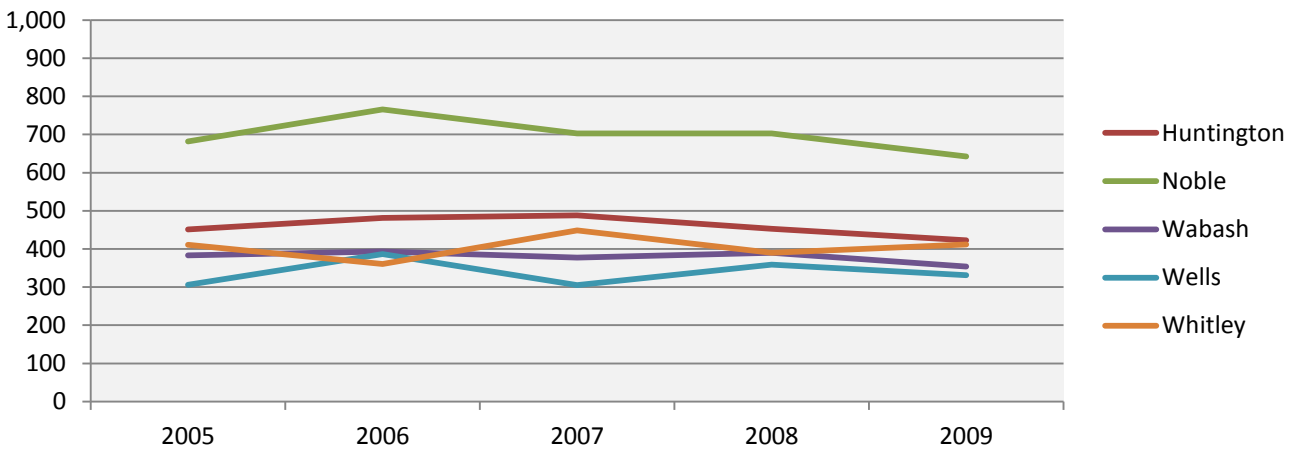
Source: Indiana State Department of Health, Epidemiology Resource Center

Table 46. Number of Live Births, 2005-2009

	2005	2006	2007	2008	2009
Huntington	451	481	488	453	423
Noble	682	766	703	703	642
Wabash	383	393	377	390	354
Wells	306	387	305	359	331
Whitley	411	361	449	390	412
Indiana	87,088	89,404	89,719	88,679	86,126

Source: Indiana State Department of Health, Epidemiology Resource Center

Figure 19. Number of Live Births, 2005-2009



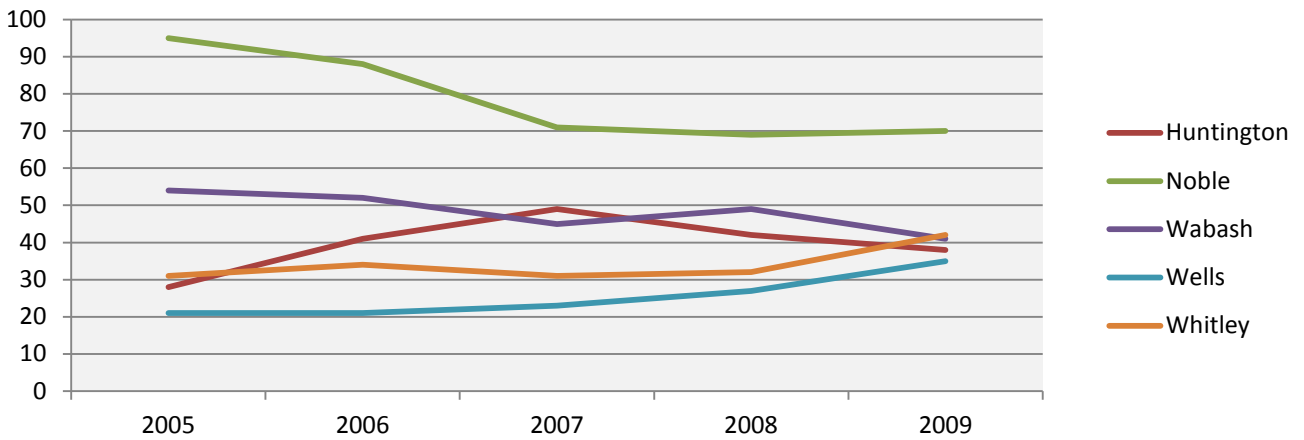
Source: Indiana State Department of Health, Epidemiology Resource Center

Table 47. Number of Teen Births (Ages 15-19), 2005-2009

	2005	2006	2007	2008	2009
Huntington	28	41	49	42	38
Noble	95	88	71	69	70
Wabash	54	52	45	49	41
Wells	21	21	23	27	35
Whitley	31	34	31	32	42
Indiana	9,497	9,611	9,931	9,602	9,484

Source: Indiana State Department of Health, Epidemiology Resource Center

Figure 20. Number of Teen Births (Ages 15-19), 2005-2009



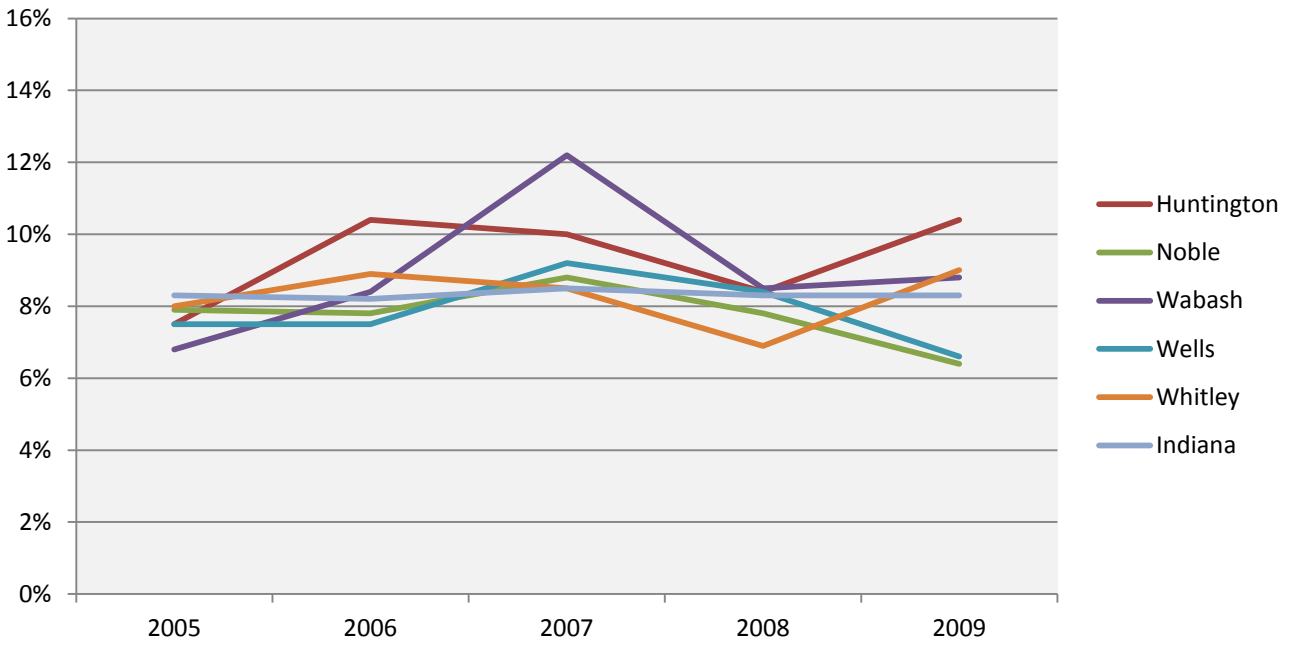
Source: Indiana State Department of Health, Epidemiology Resource Center

Table 48. Percentage Low Birth Weight (< 2500 Grams), 2005-2009

	2005	2006	2007	2008	2009
Huntington	7.5%	10.4%	10.0%	8.4%	10.4%
Noble	7.9%	7.8%	8.8%	7.8%	6.4%
Wabash	6.8%	8.4%	12.2%	8.5%	8.8%
Wells	7.5%	7.5%	9.2%	8.4%	6.6%
Whitley	8.0%	8.9%	8.5%	6.9%	9.0%
Indiana	8.3%	8.2%	8.5%	8.3%	8.3%

Source: Indiana State Department of Health, Epidemiology Resource Center

Figure 21. Percentage Low Birth Weight (< 2500 Grams), 2005-2009



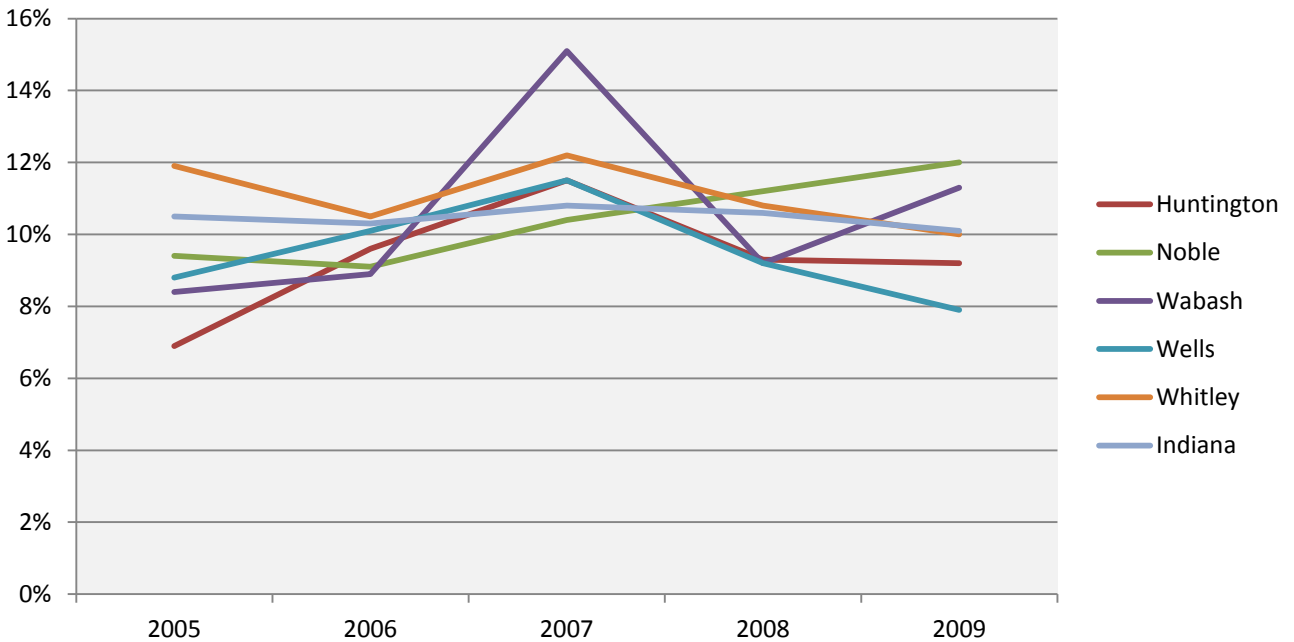
Source: Indiana State Department of Health, Epidemiology Resource Center

Table 49. Percentage Preterm Births, 2005-2009

	2005	2006	2007	2008	2009
Huntington	6.9%	9.6%	11.5%	9.3%	9.2%
Noble	9.4%	9.1%	10.4%	11.2%	12.0%
Wabash	8.4%	8.9%	15.1%	9.2%	11.3%
Wells	8.8%	10.1%	11.5%	9.2%	7.9%
Whitley	11.9%	10.5%	12.2%	10.8%	10.0%
Indiana	10.5%	10.3%	10.8%	10.6%	10.1%

Source: Indiana State Department of Health, Epidemiology Resource Center

Figure 22. Percentage Preterm Births, 2005-2009



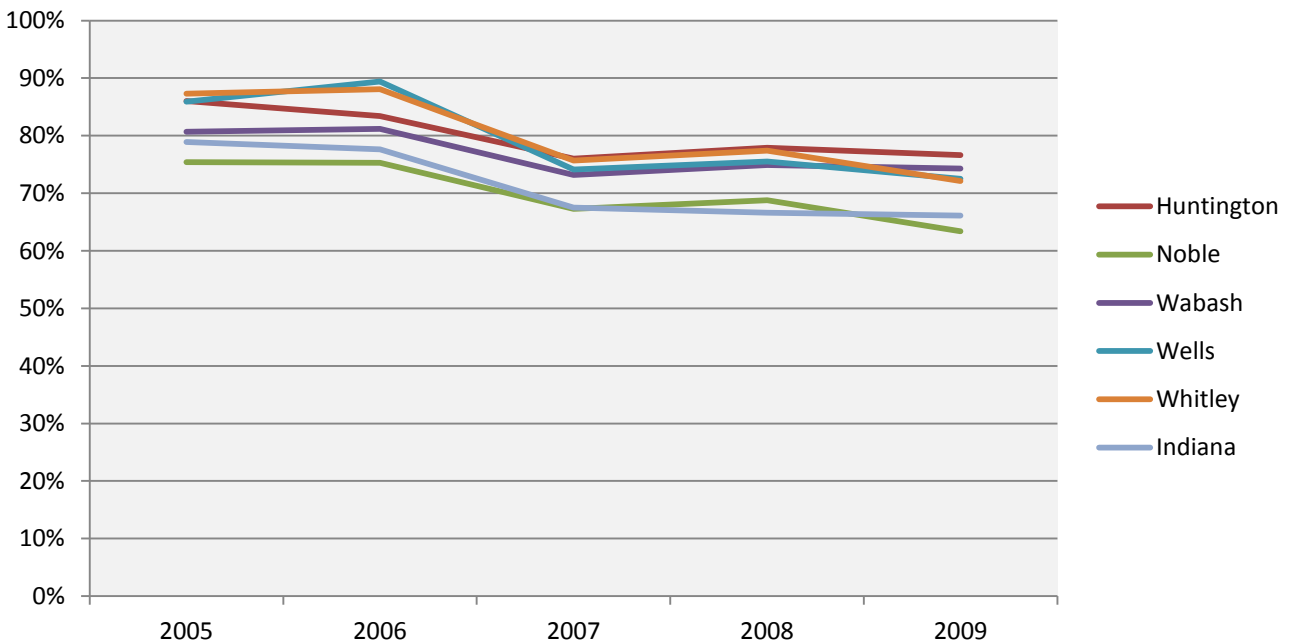
Source: Indiana State Department of Health, Epidemiology Resource Center

Table 50. Percentage Beginning Prenatal Care in the First Trimester, 2005-2009

	2005	2006	2007	2008	2009
Huntington	86.0%	83.4%	76.0%	77.9%	76.6%
Noble	75.4%	75.3%	67.3%	68.8%	63.4%
Wabash	80.7%	81.2%	73.2%	74.9%	74.3%
Wells	85.9%	89.4%	74.1%	75.5%	72.5%
Whitley	87.3%	88.1%	75.7%	77.4%	72.1%
Indiana	78.9%	77.6%	67.5%	66.6%	66.1%

Source: Indiana State Department of Health, Epidemiology Resource Center

Figure 23. Percentage Beginning Prenatal Care in the First Trimester, 2005-2009



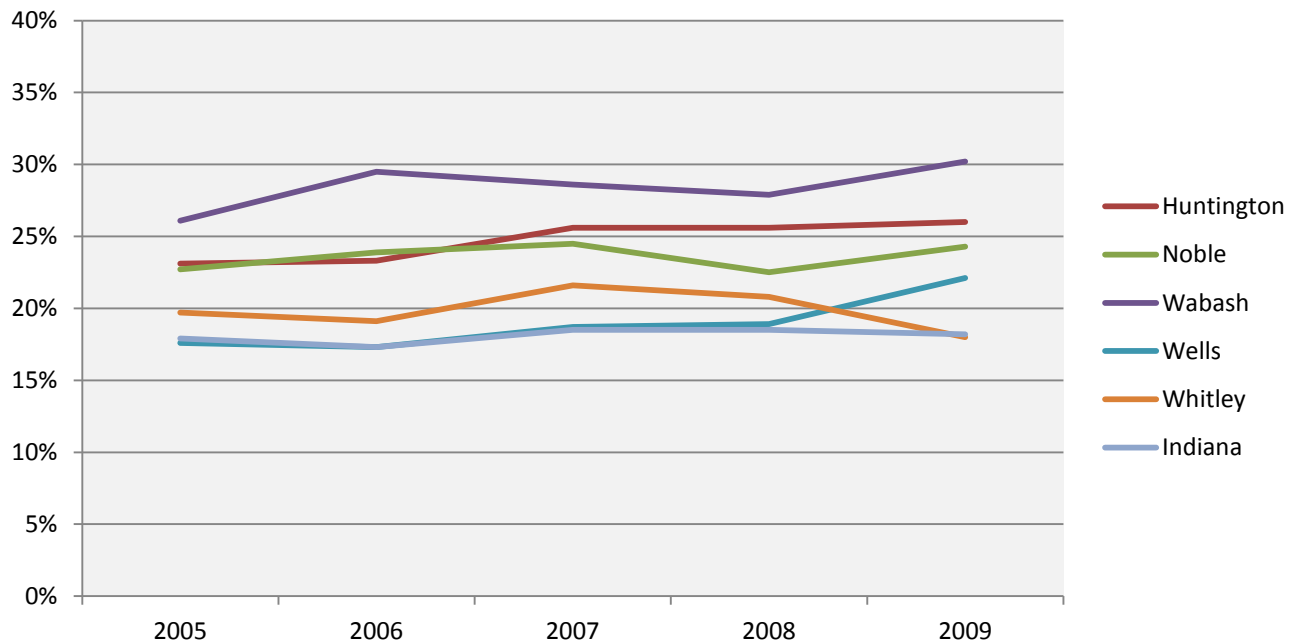
Source: Indiana State Department of Health, Epidemiology Resource Center

Table 51. Percentage of Mothers Who Smoked During Pregnancy, 2005-2009

	2005	2006	2007	2008	2009
Huntington	23.1%	23.3%	25.6%	25.6%	26.0%
Noble	22.7%	23.9%	24.5%	22.5%	24.3%
Wabash	26.1%	29.5%	28.6%	27.9%	30.2%
Wells	17.6%	17.3%	18.7%	18.9%	22.1%
Whitley	19.7%	19.1%	21.6%	20.8%	18.0%
Indiana	17.9%	17.3%	18.5%	18.5%	18.2%

Source: Indiana State Department of Health, Epidemiology Resource Center

Figure 23. Percentage of Mothers Who Smoked During Pregnancy, 2005-2009



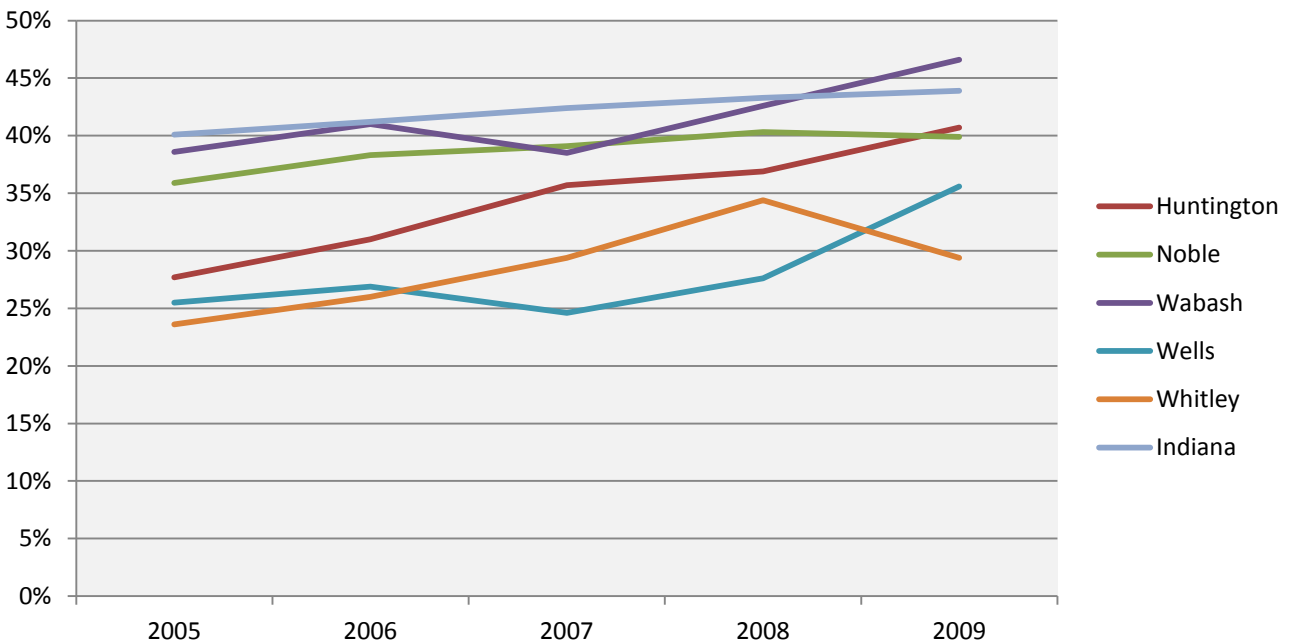
Source: Indiana State Department of Health, Epidemiology Resource Center

Table 52. Percentage of Unmarried Mothers, 2005-2009

	2005	2006	2007	2008	2009
Huntington	27.7%	31.0%	35.7%	36.9%	40.7%
Noble	35.9%	38.3%	39.1%	40.3%	39.9%
Wabash	38.6%	41.0%	38.5%	42.6%	46.6%
Wells	25.5%	26.9%	24.6%	27.6%	35.6%
Whitley	23.6%	26.0%	29.4%	34.4%	29.4%
Indiana	40.1%	41.2%	42.4%	43.3%	43.9%

Source: Indiana State Department of Health, Epidemiology Resource Center

Figure 27. Percentage of Unmarried Mothers, 2005-2009



Source: Indiana State Department of Health, Epidemiology Resource Center

HEALTHCARE ACCESS

HEALTH INSURANCE COVERAGE

Table 53. Percentage Uninsured, 2010

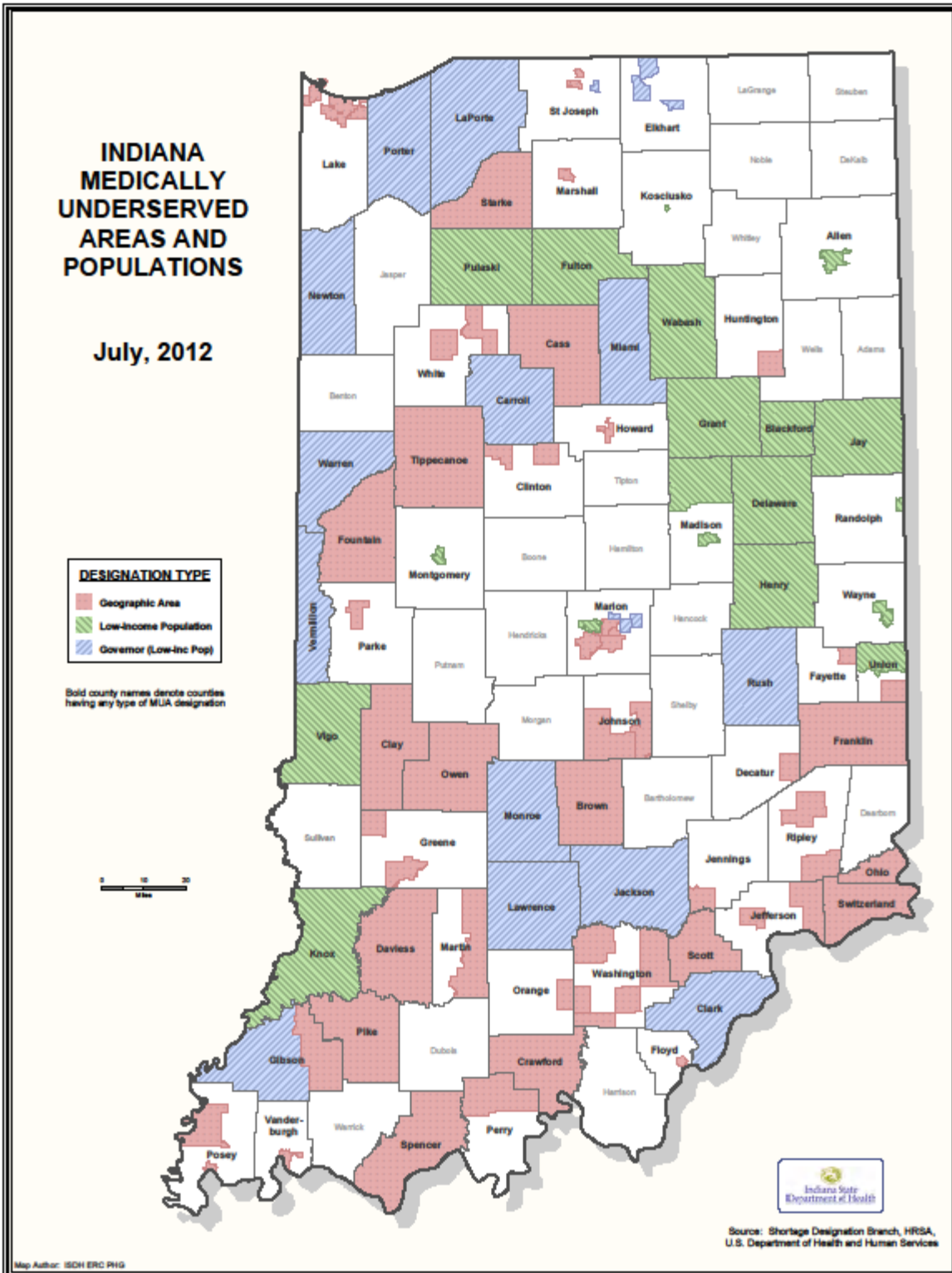
	< 65 Years of Age	< 19 Years of Age	18-64 Years of Age
Huntington	16.6%	8.4%	20.0%
Noble	20.3%	12.5%	23.9%
Wabash	15.2%	8.3%	18.1%
Wells	15.3%	9.2%	18.0%
Whitley	14.5%	8.7%	17.0%

Source: U.S. Census Bureau

PROFESSIONAL SHORTAGE and MEDICALLY UNDERSERVED AREAS

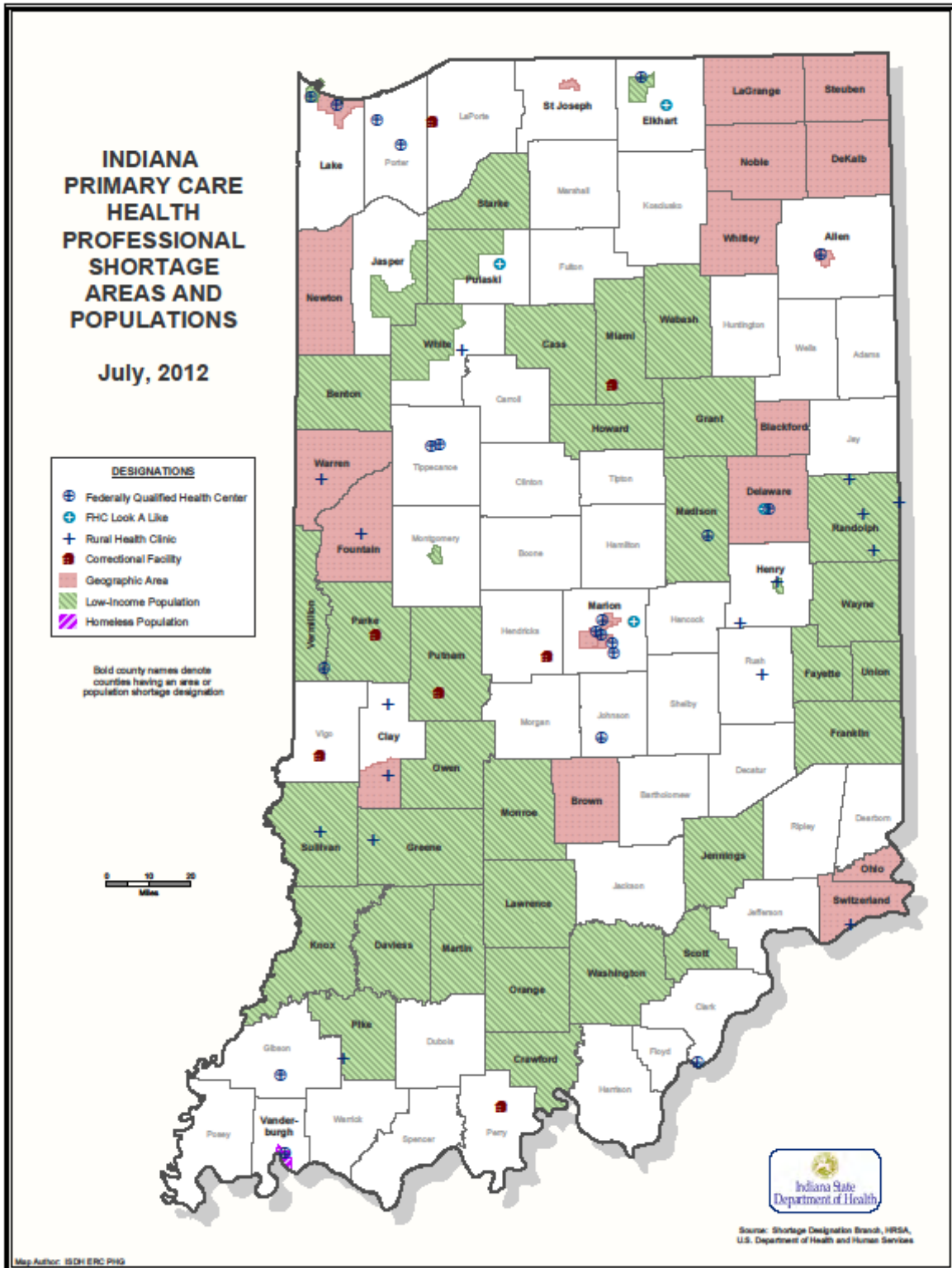
Maps are on following pages.

Figure 24. Indiana Medically Underserved Areas and Populations, 2012



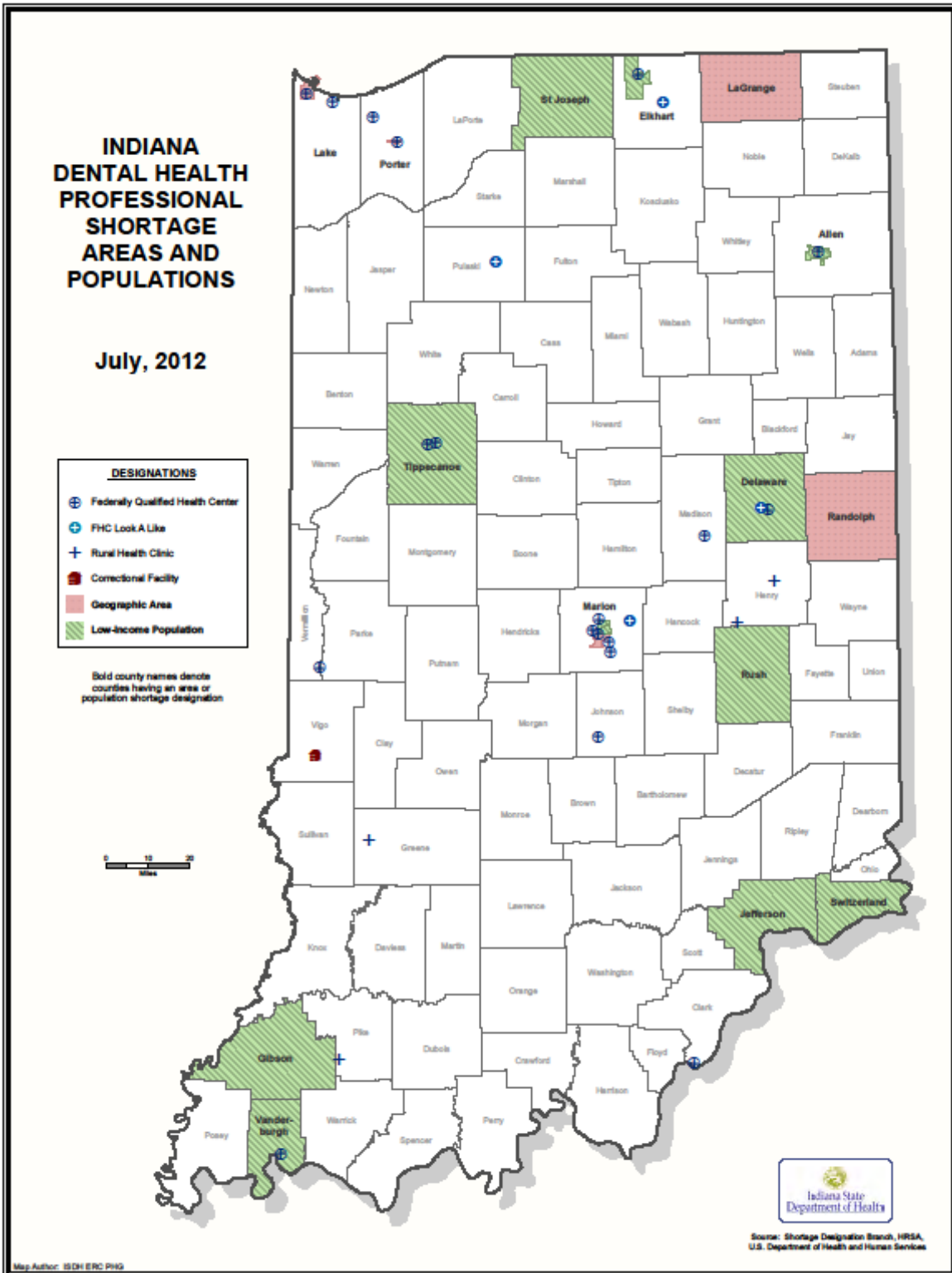
Source: ISDH and Shortage Designation Branch, HRSA, U.S. Department of Health and Human Services

Figure 25. Indiana Primary Care Health Professional Shortage Areas and Populations, 2012



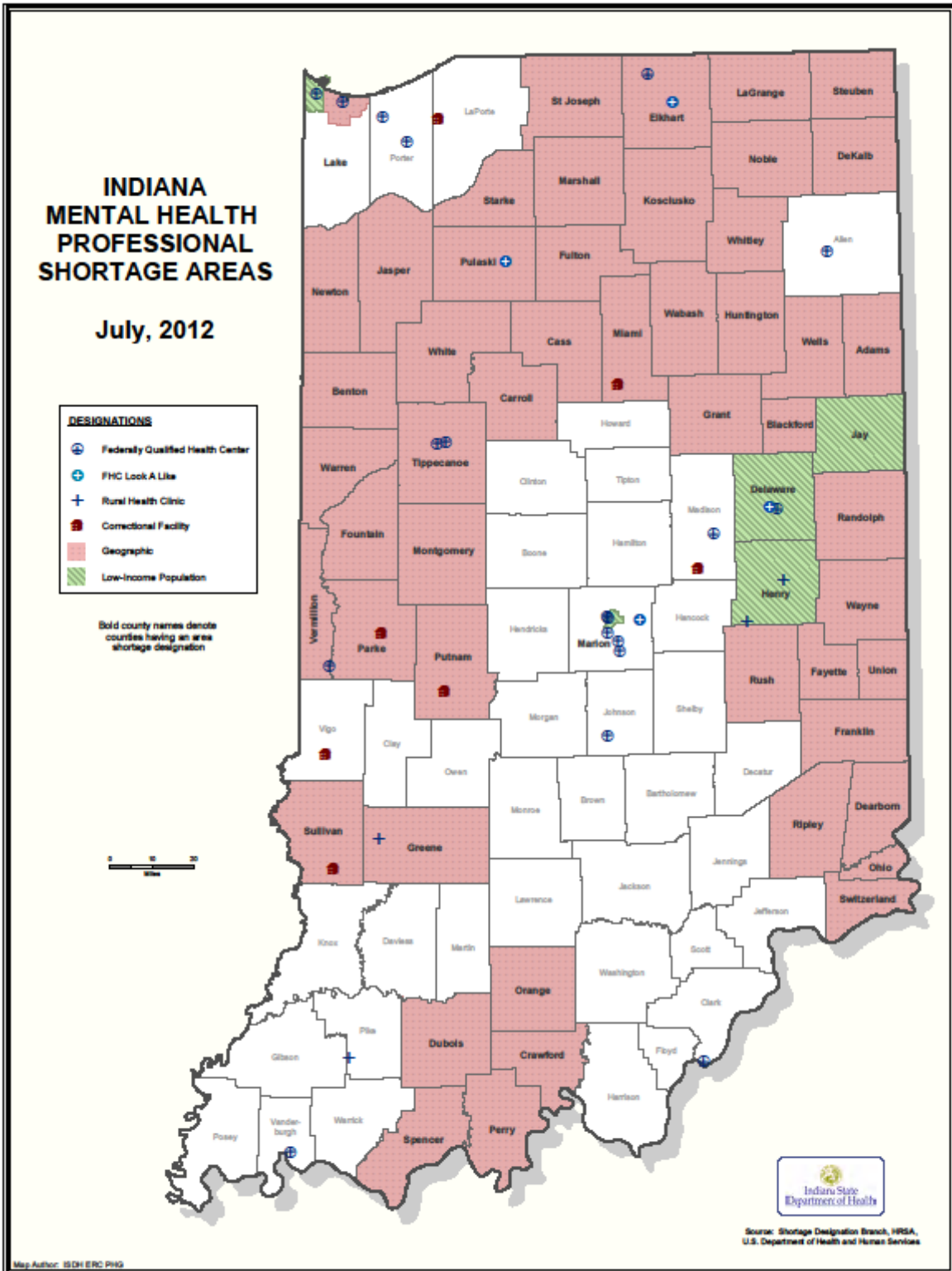
Source: ISDH and Shortage Designation Branch, HRSA, U.S. Department of Health and Human Services

Figure 26. Indiana Dental Health Professional Shortage Areas and Populations, 2012



Source: ISDH and Shortage Designation Branch, HRSA, U.S. Department of Health and Human Services

Figure 27. Indiana Mental Health Professional Shortage Areas, 2012



Source: ISDH and Shortage Designation Branch, HRSA, U.S. Department of Health and Human Services

APPENDIX A

ALL OTHER DISEASES

120	Coagulation defects, purpura and other hemorrhagic conditions.....	D65-D69
121	Other diseases of blood and blood-forming organs.....	D70-D76
122	Certain disorders involving the immune mechanism.....	D80-D89
123	Disorders of thyroid gland.....	E00-E07
125	Disorders of pituitary gland.....	E22-E23
126	Disorders of adrenal glands.....	E24-E27
127	Diseases of thymus.....	E32
128	Other endocrine diseases.....	E15-E21,E28-E31,E34
132	Obesity and other hyperalimentation.....	E65-E68
133	Cystic fibrosis.....	E84
134	Volume depletion, disorders of fluid, electrolyte and acid-base balance.....	E86-E87
135	Other metabolic disorders.....	E70-E83,E85,E88
136	Organic dementia.....	F01,F03
137	Other and unspecified organic mental disorders.....	F04-F09
138	Mental and behavioral disorders due to use of alcohol.....	F10
139	Mental and behavioral disorders due to other psychoactive substance use.....	F11-F19
140	Schizophrenia, schizotypal and delusional disorders.....	F20-F29
141	Mood (affective) disorders.....	F30-F39
142	Neurotic, stress-related and somatoform disorders.....	F40-F48
143	Mental retardation.....	F70-F79
144	Other and unspecified mental and behavioral disorders.....	F50-F69,F80-F99
146	Other inflammatory diseases of central nervous system.....	G04-G09
149	Multiple sclerosis.....	G35
150	Epilepsy.....	G40-G41
151	Transient cerebral ischemic attacks and related syndromes.....	G45
152	Infantile cerebral palsy.....	G80
153	All other diseases of nervous system.....	G10-G12,G23-G25,G31,G36-G37,G43-G44,G47-G72,G81-G98
154	Diseases of the eye and adnexa.....	H00-H57
155	Diseases of the ear and mastoid process.....	H60-H93
215	Diseases of oral cavity, salivary glands and jaws.....	K00-K14
216	Diseases of esophagus.....	K20-K22
221	Gastritis and duodenitis.....	K29
222	Dyspepsia and other diseases of stomach and duodenum.....	K30-K31
225	Crohn's disease and ulcerative colitis.....	K50-K51

226 Vascular disorders and obstruction of intestine without hernia.....	K55-K56
227 Diverticular disease of intestine.....	K57
228 Other diseases of intestines and peritoneum.....	K52,K58-K63
229 Diseases of peritoneum.....	K65-K66
233 Other diseases of liver.....	K71-K72,K75-K76
235 Pancreatitis.....	K85,K86.0-K86.1
236 Other disorders of biliary tract and pancreas.....	K83,K86.2-K86.9
237 All other diseases of digestive system.....	K90,K92
238 Infections of skin and subcutaneous tissue.....	L00-L08
239 Other and unspecified diseases of skin and subcutaneous tissue.....	L10-L98
240 Rheumatoid arthritis and related inflammatory polyarthropathies.....	M05-M08
241 Systemic lupus erythematosus.....	M32
242 Other arthropathies and related disorders.....	M00,M02,M10-M31,M33-M35
243 Dorsopathies.....	M40-M54
244 Soft tissue disorders.....	M60-M79
245 Osteoporosis.....	M80-M81
246 Other osteopathies, chondropathies and disorders of musculoskeletal system and connective tissue.....	M83-M99
250 Renal tubulo-interstitial diseases.....	N13.0-N13.5,N13.7-N13.9,N14,N15.0,N15.8-N15.9
252 Urolithiasis.....	N20-N23
254 Urinary tract infection, site not specified.....	N39.0
255 Other diseases of urinary system.....	N28-N36,N39.1-N39.9
257 Other diseases of male genital organs.....	N41-N50
258 Disorders of breast.....	N60-N64
260 Noninflammatory disorders of female genital tract.....	N80-N98