

# ATLAS of 1938 WELLS COUNTY

## SUNIER & LOCKWOOD INC. INSURANCE

Oldest and Largest Insurance Agency

In Wells County

OVER 2500 SATISFIED POLICYHOLDERS

BLUFFTON, IND.  
PHONE - 11

INSURE WITH  
SUNIER & LOCKWOOD  
REROOF *with* GRIMES

A FREE INSPECTION

T. STORM  
ROOFING COMPANY INC.

Gene Grimes  
BLUFFTON, IND.  
PHONE 163

ANOTHER FINE LOGAN-LONG ROOF





# Tree Surgery Service—C. J. Grimes

BLUFFTON, IND.  
PHONE 163

## Emma J. Stone 2:07 $\frac{1}{2}$ Goes by Herself Without Companion or Driver



JUDGE LAW F. M. BUCKNER EMMA J. STONE

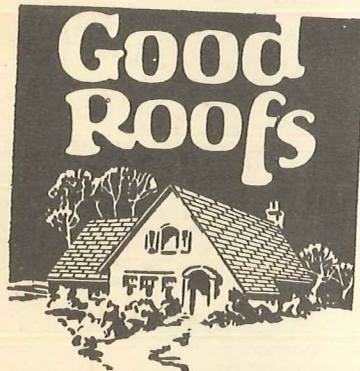
TRAINED AND  
BOOKED BY  
F. M. BUCKNER  
PONETO, IND.

OWNED BY  
DR. J. F. BUCKNER  
PONETO, IND.

MY HOBBIES - A Useful Life - Successful Boys - Clean Politics - Good Horses -  
A Just Reward for Services Rendered

MY RECORD - A Sponsor of Clean Sports - Helped Several Young Men and Women Launch  
Successful Careers - Fifty-Three Years With One Blood-Line of Racing Stock  
Thirty Years Successful Racing - A Good Citizen

MY MOTTO - Do The Things You Like Best To Do—MARION BUCKNER



Hoover Painting and Roofing Co.  
615 South Elm Street  
MUNCIE, INDIANA

From H. E. (GENE) GRIMES  
Secretary-Treasurer & Salesman  
203 West Central Ave.  
BLUFFTON, INDIANA

### DEAR FRIENDS:

What an opportunity this is for you, who will co-operate in a little pleasant counsel on "HOW TO SAVE WITH SAFETY" on your roofing and siding problems.

We wholesale and retail roofing, you put it on, or we contract the job. We carry compensation insurance and will BOND our GUARANTEES.

I am very fortunate to be able to make you exceptional offers in asbestos or asphalt shingles, roll or build-up roofing, coating, water proofing materials, and siding so I want you to be sure to co-operate with us.

Call Me at Bluffton, Phone 163

Sincerely yours,  
Howard E. Grimes

P. S. Hope you like the "Atlas" and will deal with those who made it possible for you to receive it, FREE.

Gene

*Certain-teed*  
**ROOFING**  
and  
**SHINGLES**

LARGEST INDUSTRIAL  
ROOFING AND PAINTING  
CONTRACTORS IN  
INDIANA

can  
your  
roof  
take it?

# ADVERTISERS

### ABSTRACTS:

John W. Carnall & Sons, Bluffton, Phone 82

### AGRICULTURAL LIMESTONES:

Erie Stone Co., Bluffton, Phone 658  
Heller Stone Co., Rotkford  
Meshberger Bros. Stone Corp., Linn Grove

### AUCTIONEERS:

Ellenberger Bros., Bluffton, Phone 734W

### AUTOMOBILE ACCESSORIES:

Bluffton Rubber Works, Bluffton, Phone 450  
Graden's, Bluffton, Phone 228  
Houser Chevrolet Sales, Bluffton, Phone 102  
Moser Super Service, Bluffton, Phone 300  
Urban City Garage, Ossian

### AUTOMOBILE AGENCIES AND DEALERS:

Houser Chevrolet Sales, Bluffton, Phone 102  
Urban City Garage, Ossian

### AUTOMOBILE BODY REPAIRING:

Covault Auto Paint and Body Shop, Bluffton, Phone 729  
Houser Chevrolet Sales, Bluffton, Phone 102  
Urban City Garage, Ossian

### BANKS

Farmers and Merchants Bank, Bluffton, Phone 15  
Old First National Bank in Bluffton, Phone 71

### BARBERS:

Acton Barber Shop, 110 E. Market, Bluffton

### BATTERIES:

Krummen Auto Service, Bluffton, Phone 721  
L. L. Bender & Co., Bluffton, Phone 130

### BEVERAGES:

Joe's Cafe, Bluffton, Phone 537  
Kloffenstine Cigar Store, Bluffton, Phone 215  
Ossian Drug Store, Ossian  
The New Princess, Bluffton, Phone 14

### BUTTER MANUFACTURERS:

Parlor City Creamery, Bluffton, Phone 564

### CANNERS:

Bluffton Custom Cannery, State Road 1, Bluffton

### CLEANERS:

Bradburn's, Bluffton, Phone 359  
Square Deal Cleaners, Bluffton, Phone 198  
Sunbright Cleaners, Bluffton, Phone 9

### COAL—COKE

Craigville Elevator Co., Craigville  
Engler, W. M. & Co., Poneto, Liberty Center  
& Bluffton Phones

### FARMERS GRAIN CO., LIBERTY CENTER

Ben Levy Grain Co., Ossian  
Simpson Grain Co. Uniondale and Simpson

### CONFECTIONS—DRUGS—See General Merchandise

### HECKMANS, LIBERTY CENTER

### OSSIAN DRUG CO., OSSIAN

### CREAMERIES: See Produce Buyers

### ELECTRICAL APPLIANCES AND SERVICE

Bender, L. L. & Co., Bluffton, Phone 130  
Bluffton Rubber Works, Bluffton, Phone 450  
Boltin, Ralph, Liberty Center

### Fritz Electric Co., Bluffton, Phone 800

### FARMS FOR SALE:

National Farm Loan Association  
Theo. V. Harsh, Sec. Treas., Bluffton

### MUNCIE PRODUCTION CREDIT ASS'N.

Theo. V. Harsh, Local Representative

### O. E. LESH, BLUFFTON, PHONE 281

### W. J. DUSTMAN, BLUFFTON

### FEED AND GRAIN:

Craigville Elevator Co., Craigville  
Engler, W. M. & Co. Poneto, Liberty Center  
& Bluffton Phones

### FARMERS GRAIN CO., LIBERTY CENTER

Ben Levy Grain Co., Ossian  
Simpson Grain Co., Uniondale and Simpson

### FILLING STATION: See Service Stations

### FLORISTS:

Myers Floral Co., Phone 81

### FRUITS AND VEGETABLES:

Brewer Fruit Market, Bluffton

### FUNERAL DIRECTORS AND AMBULANCE SERVICE:

Jahn, R. M., Bluffton, Phone 109  
McBride, J. A. & Son, Bluffton, Phone 271  
Thomas, H. & Son, Bluffton, Phone 114

### FURNACES AND STOKERS:

Jerry L. Myers, Bluffton Phone 585

### FURNITURE:

Bradburn Upholstery Service, Bluffton, Phone 359  
Linn & Saurer, Bluffton, Phone 448  
Thoma & Son, Bluffton, Phone 114

### GENERAL MERCHANDISE:

Barrington, Jess, Poneto  
Cupps, Uniondale  
Gerbers I. G. A. Store, Craigville

### GERBERS, LIBERTY CENTER

Haughton, J. R., Liberty Center  
Johnloz, H. J., Murray, Phone Tocsin 6 on 2

### KNIGHT & SON, ZANESVILLE

Morris 5 and 10c Store, Bluffton, Phone 945  
Pinney's, Mt. Zion, Phone Warren 70-C

### WASSON, CLEN, TOCSIN, PHONE 1 ON 27

### TOMAN, J. C., PONETO

### GROCERS: See also General Merchandise

Ratliff Drive in Store, Bluffton

### HARDWARE:

The Hite Company, Uniondale  
Minger, Aaron, Craigville, Phone 40  
Petroleum Hardware Co., Petroleum

### WASSONS GENERAL STORE, TOCSIN, PHONE 1 ON 27

### TOMAN'S GENERAL STORE, PONETO

### HARNESS:

David Meyer Co., Bluffton, Phone 314

### HARNESS REPAIRING:

Fred Melick, Poneto  
David Meyer Co., Bluffton, Phone 314

### HATCHERIES:

Baumgartner's Hatcheries, Bluffton, Phone 48  
Knights Hatcheries, Zanesville, Roanoke, Ossian

### HATTERS:

Square Deal Cleaners, Bluffton, Phone 198  
Joe's Hat Shop, 117 S. Johnson St., Bluffton

### HAULING:

Habigs, Bluffton, Phone 49

### INSURANCE:

John W. Carnall & Sons, Bluffton, Phone 82  
Walter L. Fetters, Bluffton, Phone 319W

### LISS (RED) GREGG, BLUFFTON

### W. A. HALL, BLUFFTON

O. E. Lesh, Bluffton, Phone 281  
Grant Pyle, Bluffton, Phone 153W

### SUNIER & LOCKWOOD, BLUFFTON, PHONE 11

### INVESTMENTS, LOANS & REAL ESTATE

John W. Carnall & Sons, Bluffton, Phone 82  
W. J. Dustman, Bluffton

### O. E. LESH, BLUFFTON, PHONE 281

### JEWELRY:

C. H. Geels, Bluffton, Phone 338

### LIGHTING: FARM LIGHTING

L. L. Bender, Bluffton, Phone 130

### LIVE STOCK BUYERS:

Farling Food Market, Bluffton, Phone 247

### LUMBER AND BUILDERS SUPPLIES:

Cline Lumber Co., Bluffton, Phone 58  
Cline-Click Lumber Co., Warren, Phone 64

### MONTPELLIER LUMBER CO., MONTPELLIER IND.

Liberty Center Lumber Co., Liberty Center  
Ossian Lumber Co., Ossian, Phone 127

### UNIONDALE LUMBER CO., UNIONDALE

### MACHINIST:

Aaron Minger, Craigville, Phone 40

### MEATS:

Farling's Food Market, Bluffton, Phone 247

### MONEY TO LOAN

National Farm Loan Association  
Theo. V. Harsh, Sec'y—Treas., Bluffton

### O. E. LESH, BLUFFTON, PHONE 281

### JOHN W. CARNALL & SONS, BLUFFTON, PHONE 82

### W. J. DUSTMAN, BLUFFTON

Muncie Production Credit Association  
Theo. V. Harsh, Local Representative, Bluffton

### PATTERN WORKING:

W. W. Wile, Bluffton, Phone 589W

### PLUMMERS:

Jerry L. Myers, Bluffton, Phone 585

### PRODUCE BUYERS:

Fryback Ice Cream & Dairy Store, Bluffton, Phone 681  
Gerbers I. G. A. Store, Craigville, Phone 43

### GERBERS STORE, LIBERTY CENTER

H. J. Johnloz, Murray, Phone, Tocsin 6 on 2  
Parlor City Creamery, Bluffton, Phone 564

### RACE HORSES

F. M. Buckner, Poneto, Indiana

### RADIATOR REPAIR:

W. W. Wile, Bluffton, Phone 589 W

### RESTAURANTS:

Ralph Boltin, Liberty Center  
The New Princess, Bluffton, Phone 14

### THE SNUG RESTAURANT, BLUFFTON, PHONE 452

### TERMINAL CAFE, BLUFFTON

### DALE ULMER, PONETO

### JOE ZARIFES, BLUFFTON, PHONE 537

### ROOFING: See also Builders Supplies

Gene Grimes, Bluffton, Phone 163

### ROOFING, WHOLESALE & RETAIL

Gene Grimes, Bluffton, Phone 163

### RUGS

Linn & Saurer, Bluffton, Phone 448

### H. THOMA & SON, BLUFFTON, PHONE 114

### WAID'S, BLUFFTON

### SERVICE STATIONS:

Bluffton Rubber Works, Bluffton, Phone 450  
Graden's, Bluffton, Phone 228

### HABIGS, BLUFFTON, PHONE 49

### HECKMAN'S, LIBERTY CENTER

Houser Chevrolet Sales, Bluffton, Phone 102  
H. J. Johnloz's, Murray, Phone, Tocsin 6 on 2

### KRUMMENS AUTO SERVICE, BLUFFTON, PHONE 721

### METTLERS STANDARD SUPER SERVICE, BLUFFTON, PHONE 31

### MOSER OIL CO., BLUFFTON, PHONE 55

### MOSER'S SUPER SERVICE, BLUFFTON, PHONE 300

### PINNEY'S, MT. ZION, PHONE, WARREN 70-C

### RATLIFFS DRIVE IN STORE, BLUFFTON, PHONE 1

### SHELL SUPER SERVICE, BLUFFTON, PHONE 912

### URBAN CITY GARAGE, OSSIAN

### LISS (RED) GREGG, BLUFFTON

### SHOE REPAIRING:

Roy Venis, Bluffton

### FRED MELICK, PONETO

### STONE: See Agricultural Lime Stone

### STOVES:

Linn & Saurer, Bluffton, Phone 448  
Waid's, Bluffton

### TAILORS: See Cleaners

### TANKS AND SHEET METAL WORKS

The Hite Company, Uniondale

### TREE SURGERY:

C. J. Grimes, Bluffton, Phone 163

I  
N  
D  
E  
X



## Attention Wells County Agriculturists

Do you know that Agricultural Limestone pays the largest possible dividends on your investment?

### How Can We Tell When the Soil Needs Lime?

The sure way to find out whether or not soil needs lime is to try lime on it. We can usually tell when the soil needs lime by the kind of vegetation that grows on it. When clovers and other legumes don't grow well, and moss and red-colored weeds and grass do grow, it's pretty sure that lime is needed.

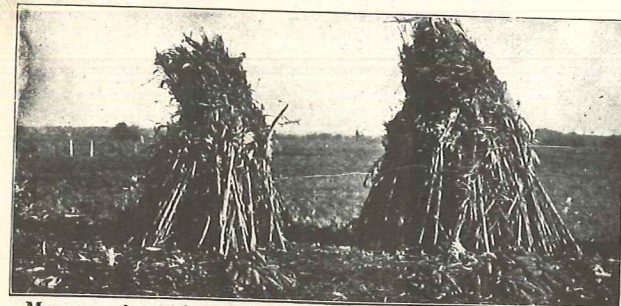
The litmus paper test is a good test to tell when the soil needs lime.



1. Get blue litmus paper at a drug store. Be sure to get blue.
2. Wet a sample of soil with soft water. Don't use hard water.
3. Make a mud ball of the wet soil. Don't make it too wet.
4. Break ball open, lay in two strips of litmus, press ball together.
5. Leave the strips of paper in the ball for 15 or 20 minutes.
6. Open ball, look at strips. They will tell if the soil is sour.

### Lime Makes Manure Worth More

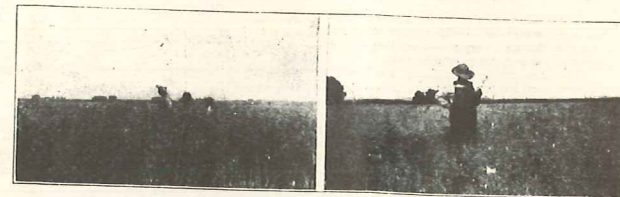
Manure is one of the best fertilizers, but manure won't bring full returns until the soil has lime. Don't mix lime with manure; put them on separately.



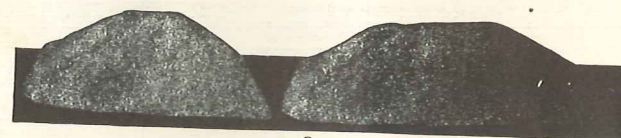
Manure only; 35.6 bushels of corn per acre. Manure and limestone; 49.3 bushels of corn per acre.



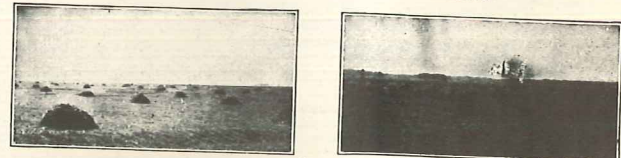
When we lime a strip in the field and find that it makes clover and other crops grow better, we have sure proof that the soil needs lime.



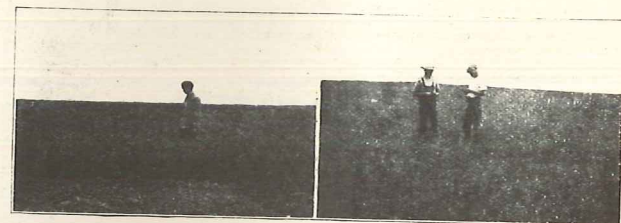
Oats like these, grown where the soil is rich and full of lime, have more lime in them than— Oats like these, grown in soil that is scarce in all kinds of plant food including lime.



Fertilizer only, 22 bushels per acre. Fertilizer and limestone; 35 bushels



Fertilizer, 1,000 pounds per acre Hay Fertilizer and limestone; 3,900 pounds



This tall, leafy alfalfa growing out of this lime soil has more lime in it than— this scattering, puny alfalfa, trying to live in a soil that is scarce of lime.



The difference between lime and no lime. Indiana Experiment Station.

Let's not forget that lime doesn't take the place of other plant food in the soil—but it does help the plant to get the other food.

We can serve your needs with the highest quality Agricultural Limestone in small or large quantities.

**THE ERIE STONE COMPANY**

Phone 658

Bluffton, Indiana

U.S. DEPT. OF AGRICULTURE  
BUREAU OF SOILS  
WELLS COUNTY SHEET

SOIL MAP  
WELLS COUNTY SHEET

STATE OF INDIANA  
DEPARTMENT OF GEOLOGY  
EDWARD S. COOPER, STATE GEOLOGIST

### WELLS COUNTY SOILS

All the soils of this county are derived from rock materials which were brought here by the great ice sheets. None of it is derived from the natural surface of the land before the glaciers came.

The highest limestone knobs were ground away, the tablelands were leveled off and later covered and the valleys were filled with boulders, gravels, sands, clays and muds. This was a slow process taking many thousands of years.

Wells county lay near the southern fringe of this great ice sheet where the melting of the ice much of the time nearly kept pace with its slow movement southward and westward. The rivers and creeks then had their origin in the ice, disgorging their loads of muds, sands, gravel and boulders into the lands along the borders of the sheet but carrying away all the soluble minerals and suspended organic matter that had become freed in the grinding processes.

The surface of Wells County is today almost exactly as the ice sheet left it. The streams turned westward at the edge of the melting ice fans. Deltas and moraines were rebuilt. Lakes and ponds were formed. Stream beds were filled and covered and soils were sorted. With the coming of a warm climate came the forests.

The quality of the soils of the county have been determined almost wholly by the processes that have operated since the glaciers left. These processes were governed partly by the dense vegetation that followed but more by the uneven elevation of the surface which controlled the natural drainage. Rock decay, freezing and thawing, oxidation, bacterial rot, leaching and washing by rain water and penetration by roots seeking plant food were the principal processes, but these were controlled largely by drainage or the lack of it. The adopted soil names are distinguishing of the manner in which these processes worked.

At the bottom of the soil series are the peats, mucks and meadows. These are common terms which distinguish the various stages of vegetal decay.

Peat occurs in Wells County only at the Twin Lakes in Jackson Township. These lakes are probably the site of a buried iceberg which became entrapped in a valley and remained frozen long after the ice sheet had melted and the surrounding surface topography had been determined.

Muck soils are composed chiefly of decayed plants with only a little admixture of silts mainly derived from atmospheric dusts. While most of these muck areas were covered with forests when our pioneers arrived, nevertheless it is safe to assume that they were once open ponds which gradually developed drainage and filled with plant remains. Significant is the fact that these muck lands have a waxy subsoil unaffected by the ordinary processes of rock decay. Freezing probably seldom reached to the bottoms of the deeper marshes after the advent of the forests.

The term "meadow" is applied to the narrow flood lands along the courses of the creeks. As a soil term it includes all the silty loams of whatever kind which make up the lower flood lands.

The Genesee silt loam is the term applied to the higher flood lands.

The Clyde silty clay loam is the black loam above the flood lands and in the depressions.

The Crosby silty clay loam is the light colored loam of the knolls above the darker colored Clyde. These types nearly always blend into each other.

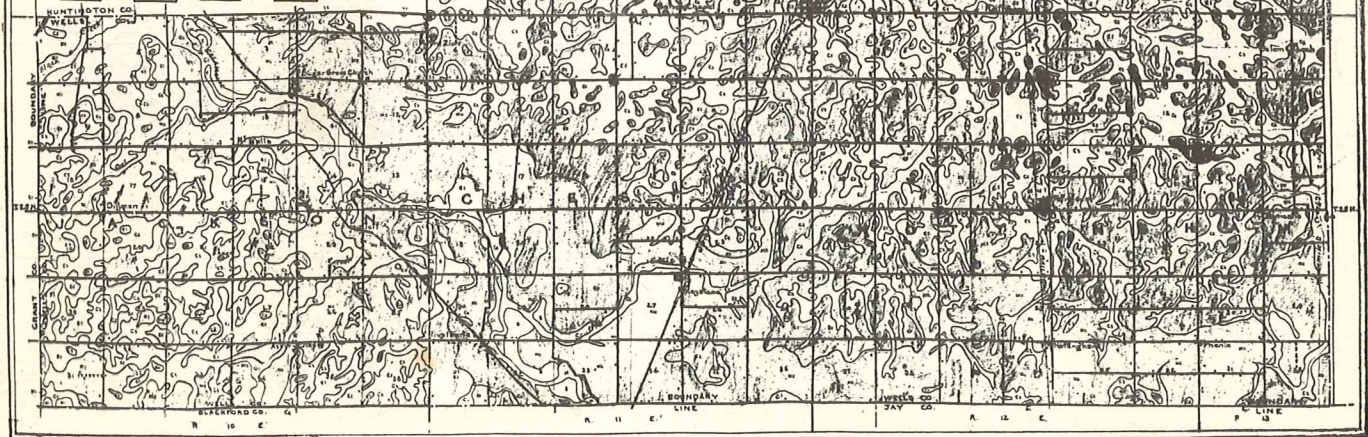
The Miami silty clay loam occupies the crests of the glacial moraines. These are distinguished from the Crosby in that the drainage of the Miami has always remained more complete.

The Bellfontain and Fox loams are the bench and terrace lands along the larger streams.

There is not room here for any discussion of the soil properties. The soil content has little relation to money values because of the wide adaptability to various crops. One fact stands out as important. The Wells County soils are deficient in soluble minerals. This is due to the manner of origin and the subsequent use of these materials by the succeeding forests. The soluble minerals where present and buried deeply under the topsoil. Limestone as a source of calcium and magnesium is available within the county. Phosphorus and potash as plant foods are fairly abundant in the soils of decayed forest material. Humus and other organic materials are most abundant in the muck and meadow lands.

LEGEND Chas H. Henley

Miami	Bellfontain	Muck	Meadow
MI	B	M	ME
Clyde	Crosby	Fox	Bellfontain
CL	C	F	B



Soil Map prepared by Northern Division, U.S. Bureau of Soils, under the direction of W. E. Thayer, of the U.S. Department of Agriculture, and E. C. Young, of the Indiana Department of Geology.

Scale 1 inch = 1 mile





### The New Princess

South Main Street Phone 14

Earnestly solicits the patronage of new customers as well as that of its present ones.

OUR SOLE PURPOSE  
Will Be To Please You.

- Sandwiches Beverages Chili Candy Cigars
- Potato Chips Cigarettes Fountain Service

A. A. (AL) LIBBY, Manager

### Unequaled Manufacturing Facilities Engineering and Research

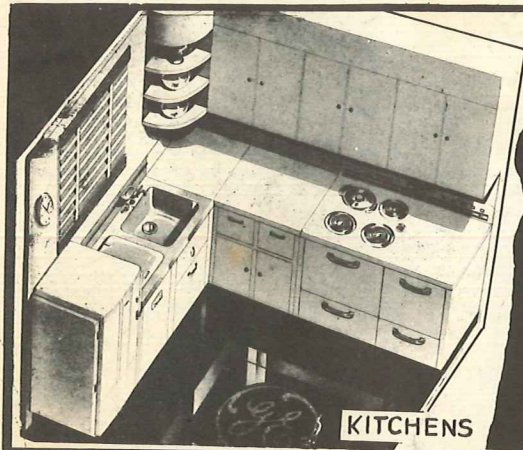
## make STOKOL THE BETTER STOKER



PLUMBING HEATING WATER SOFTENERS

### Jerry L. Myers

113 SOUTH JOHNSON ST. PHONES 585 and 560



Click... *Live electrically*  
FRITZ ELECTRIC CO.

PHILCO BLUFFTON PHONE 800 MONTPELIER

MAYTAG

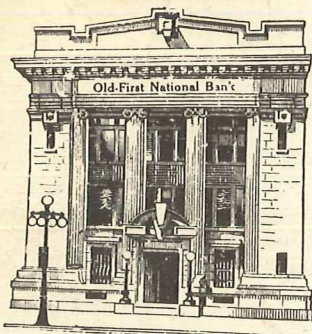


WASHER



HOOVER

KITCHENS



## Old-First National Bank

IN BLUFFTON

"A COMPLETE BANKING SERVICE"

CAPITAL \$100,000—SURPLUS \$60,000



UNITED STATES DEPOSITORY

### Gasoline Tires Oil

LINCO GASOLINE & MOTOR OILS



## GRADEN'S

### SERVICE STATION

East of Elks Club

228



Comes In All Shades  
Goes Out Red Hot

### COVAULT AUTO PAINT & BODY SHOP

H. E. COVAULT, PROP.

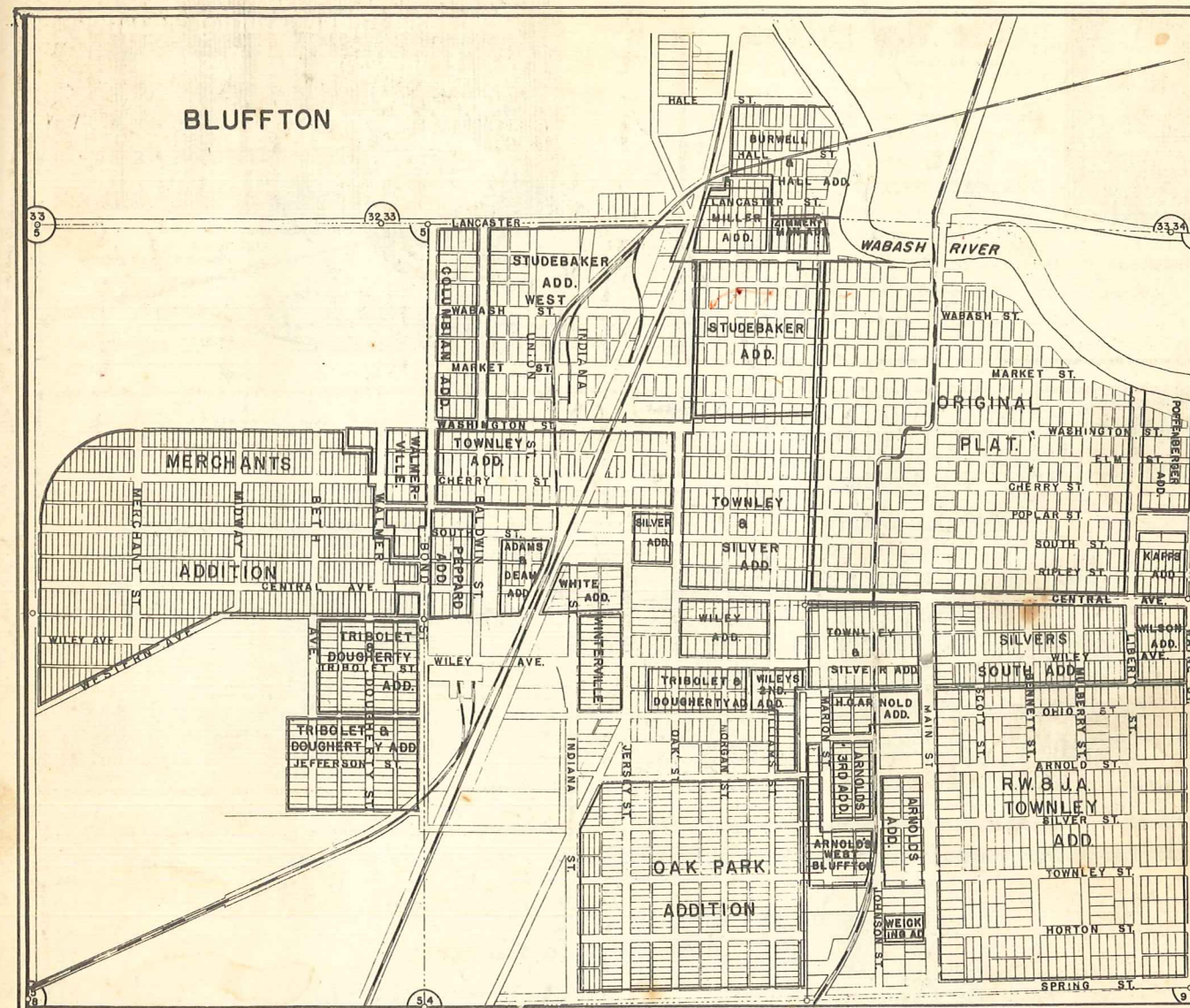
WRECKS REBUILT

TOP DECKS, WOOD WORK, GLASS INSTALLED  
DENT WORK, POLISHING AND REFINISHING

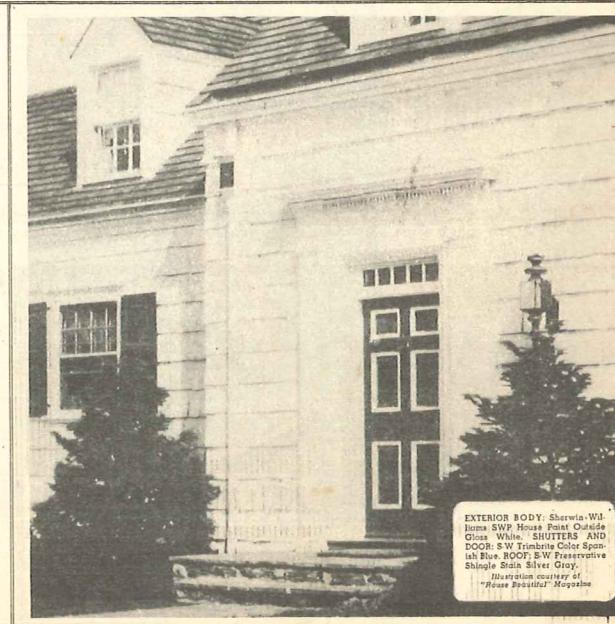
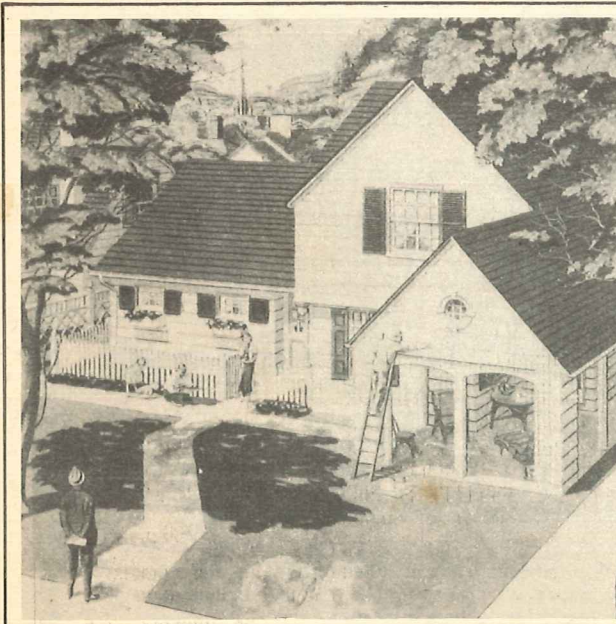
520 WEST SOUTH ST.

BLUFFTON, IND.

Phone 729



"THERE IS A MATERIAL DIFFERENCE"



EXTERIOR BODY: Sherwin-Williams SWP House from Chicago  
Color White, SHUTTERS AND  
DOOR: R.W. Trembly Color Spun-  
lab Blue, ROOF: R.W. Trembly  
Shingle Slate Silver Gray.  
Illustration courtesy of  
"House Beautiful" Magazine

CLINE LUMBER CO. Bluffton, Indiana Phone 58



**J. A. McBride & Son**  
**FUNERAL DIRECTORS**

Bluffton, Indiana

Telephone 271 and 23



Every Facility  
 to Render  
**PERFECT  
 SERVICE**

**HABIG--Hauling Contractor**

STONE, GRAVEL and HOUSEHOLD  
 MOVING IS OUR SPECIALTY  
 SHORT AND LONG HAULS



CORNER  
 WABASH - SCOTT ST.  
 BLUFFTON, IND.  
 PHONE 113

Federal Land Bank Loans on Farms  
 4% - 33 Years

A Few Land Bank Owned Farms For Sale  
 On Easy Terms

**National Farm Loan Association**

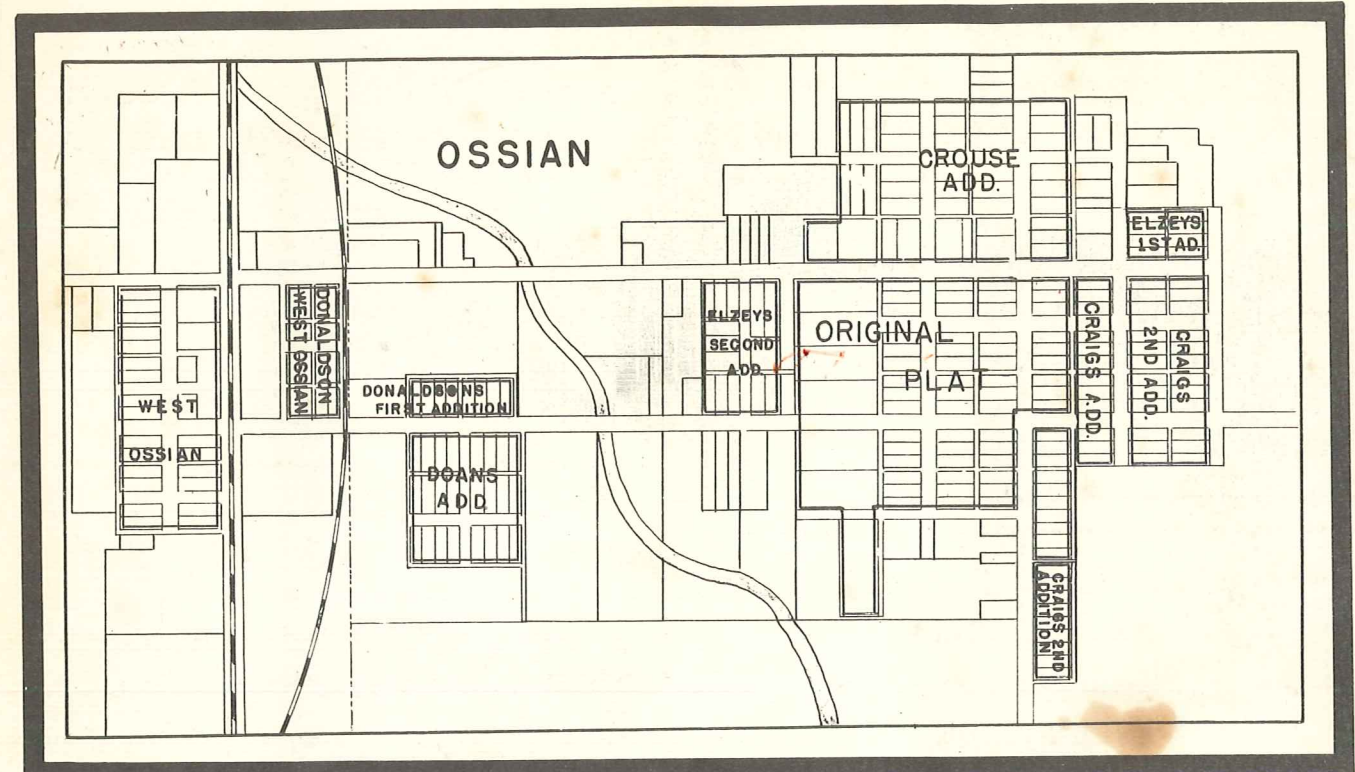
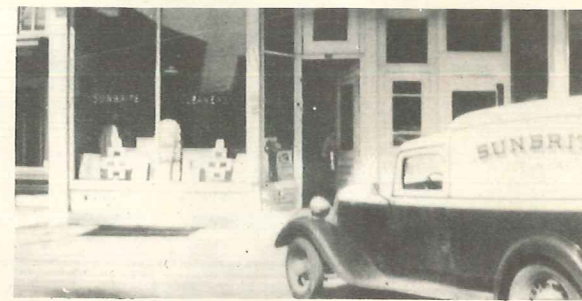
BLUFFTON AND WELLS COUNTY

THEO. V. HARSH, Sec'y-Trea.

OVER J. C. PENNEY CO. BLUFFTON, INDIANA

**Sunbrite Cleaners 208 S. Main Bluffton**

"OUR DOOR IS OPEN TO ALL"



**FARMERS**

**5% MONEY 5%**

Why not, when in need of capital, patronize the  
Muncie Production Credit Association  
 and build your own permanent  
 co-operative institution.

Loans Made To Fit Your Program—To Be Repaid When Products Are Sold

**Muncie Production Credit Association**

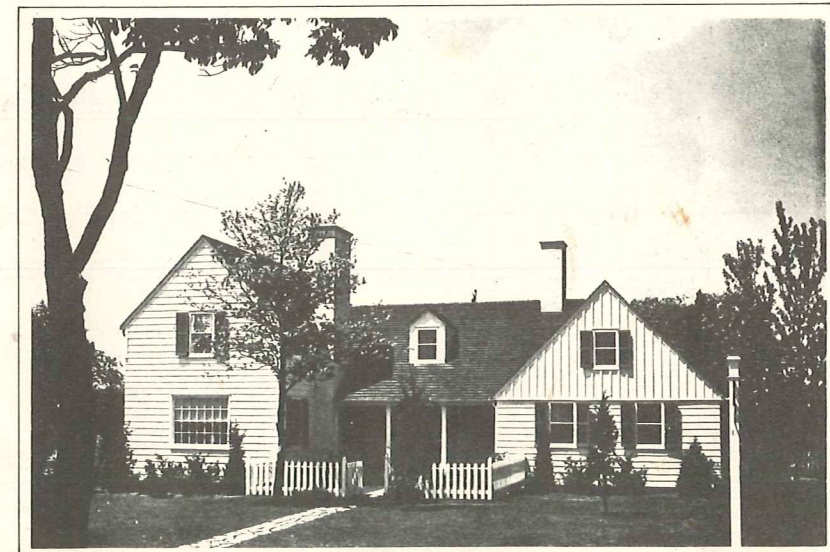
514-517 Wysor Building

Muncie, Indiana

J. O. ROBERTS, Sec'y-Treas.

THEO. V. HARSH, Local Rep.  
 OVER PENNY STORE—BLUFFTON

"A BOARD OR A BUNGALOW"



**OSSIIAN LUMBER CO.**

**OSSIIAN, INDIANA**

**PHONE 127**







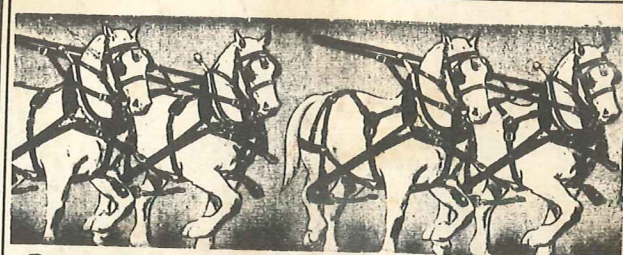
# LINN & SAURER

A Good Place To Buy

Furniture Rugs Stoves

BLUFFTON

INDIANA



DAVID MEYER COMPANY

# Parlor City Creamery

THE OLD RELIABLE

Buyers of Cream, Eggs and Poultry  
Mfr's of Rose Hill Butter

Art. A. Costello & Sons  
Bluffton, Indiana

# KRUMMEN AUTO SERVICE

Batteries

EXIDE

Ignition

203 N. Main St.

Phone 721

# FARMERS & MERCHANTS BANK

BLUFFTON, INDIANA

SERVING OUR COMMUNITY IS OUR FIRST THOUGHT

SEE US AND BE CONVINCED—OUR TIME IS YOURS FOR THE ASKING

FEDERAL DEPOSIT INSURANCE

FARMERS & MERCHANTS BANK

# V. C. FERTILIZER

High Quality, Properly Mixed

DELIVERY AT YOUR DOOR

# W. M. ENGELER & CO.

PONETO, INDIANA

GRAIN COAL FEED



TERMINAL CAFE = Bluffton, GEO. HONLEY, Prop.

WHERE YOU GET A  DEAL THE YEAR



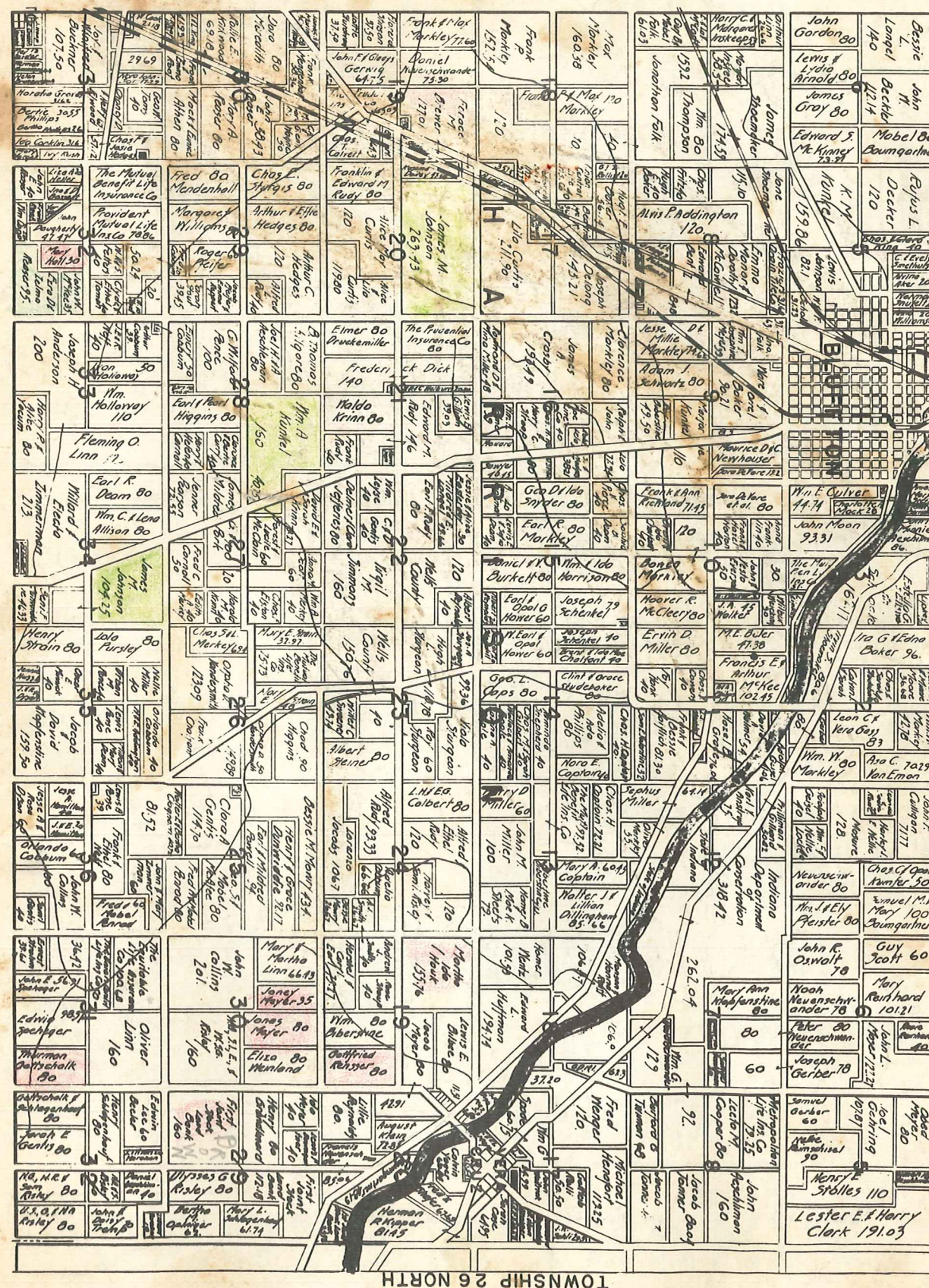
BREWER FRUIT MARKET BLUFFTON

Personal Attention to your work  
makes it possible to save you money

Suits made to measure. Pay as you wear them.  
Budget plan.

# SQUARE DEAL CLEANERS-TAILORS-HATTERS

Phone 198 112 W. Washington Bluffton, Ind.



TOWNSHIP 26 NORTH



**Cline-Click Lumber Co.**  
WARREN, INDIANA



**H. Thoma & Son**  
Funeral Directors  
Rugs Furniture



FAITHFUL  
SERVICE  
SINCE  
1853

JOHN DON JIM



**JOHN W. CARNALL & SONS**  
ABSTRACTS—INSURANCE  
REAL ESTATE—LOANS

OFFICE PHONE 82 113 SOUTH MAIN ST. BLUFFTON, IND.

**WE'LL—Sell You Anything You Want**

Buy Anything  
You  
Don't Want



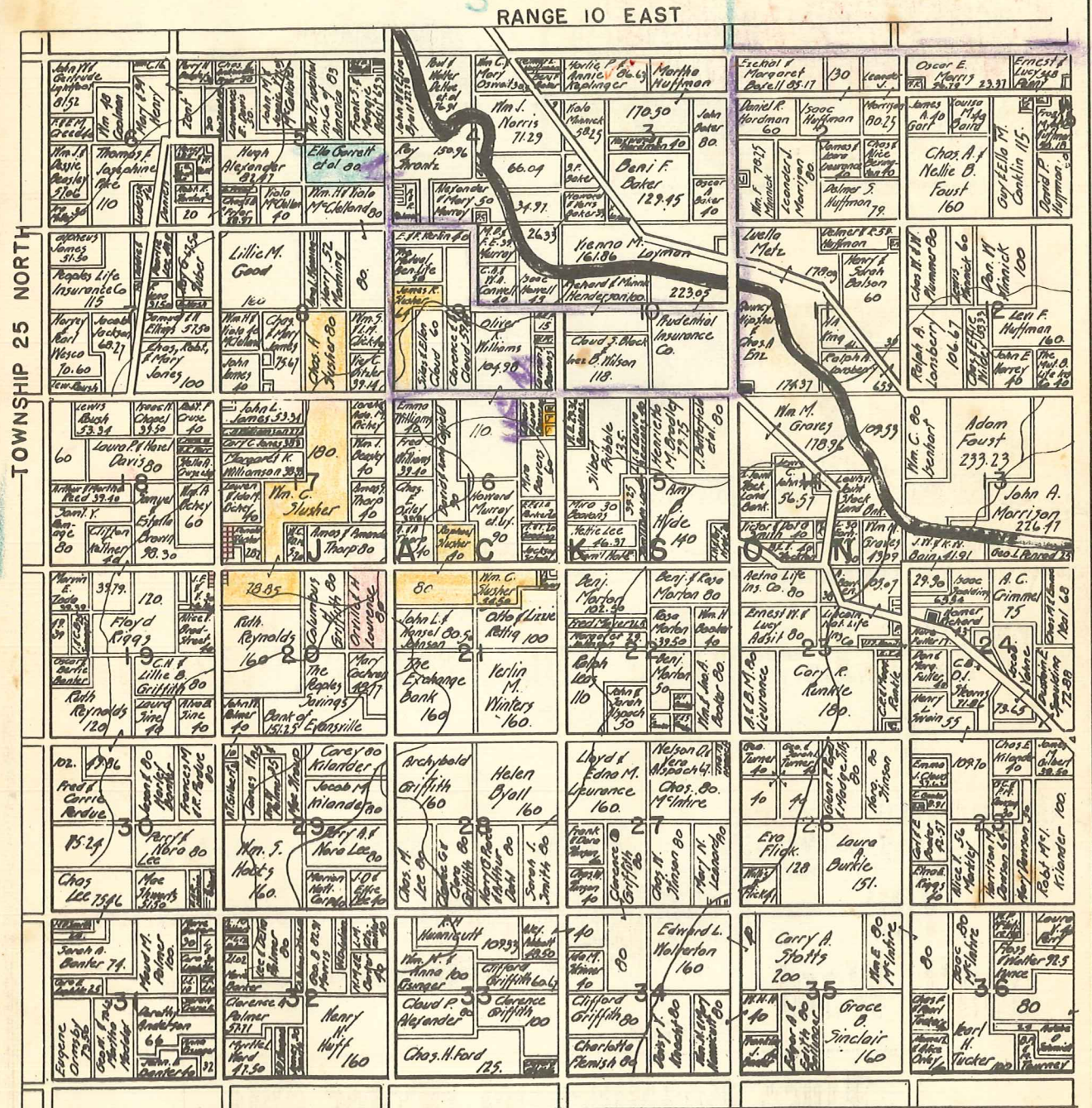
16 Years  
of  
Successful  
Service

**Linco Gasoline and Motor Oils**

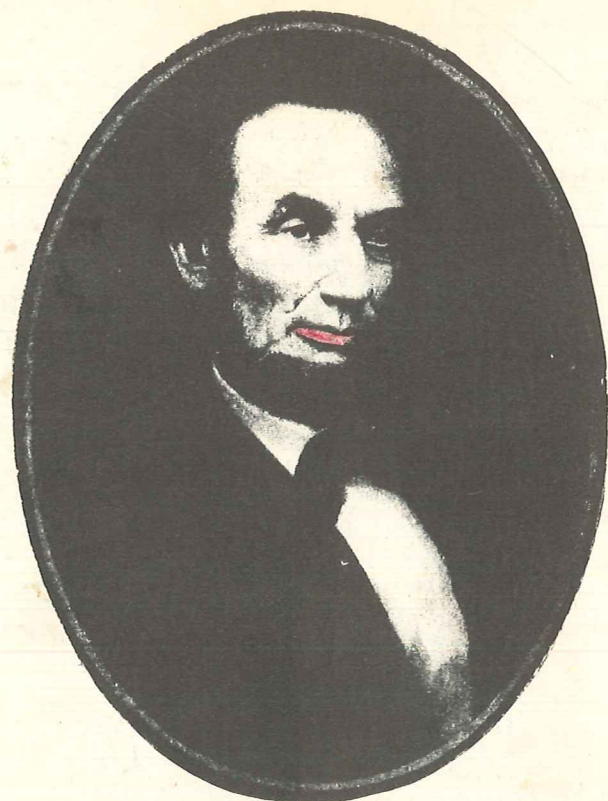
**PINNEY'S STORE**

Mt. Zion

Phone Warren 70-C







We, the Republican Central Committee of Wells County, advocate a platform every American can support:

**National**

- Government, Sovereign under the Constitution.
- Government by the majority and not by minorities, lobbies or cliques
- Government by regulation and not by competition with our citizens
- Government by abundance and not by restriction
- Freedom of initiative, Tolerance, Good Will

**State**

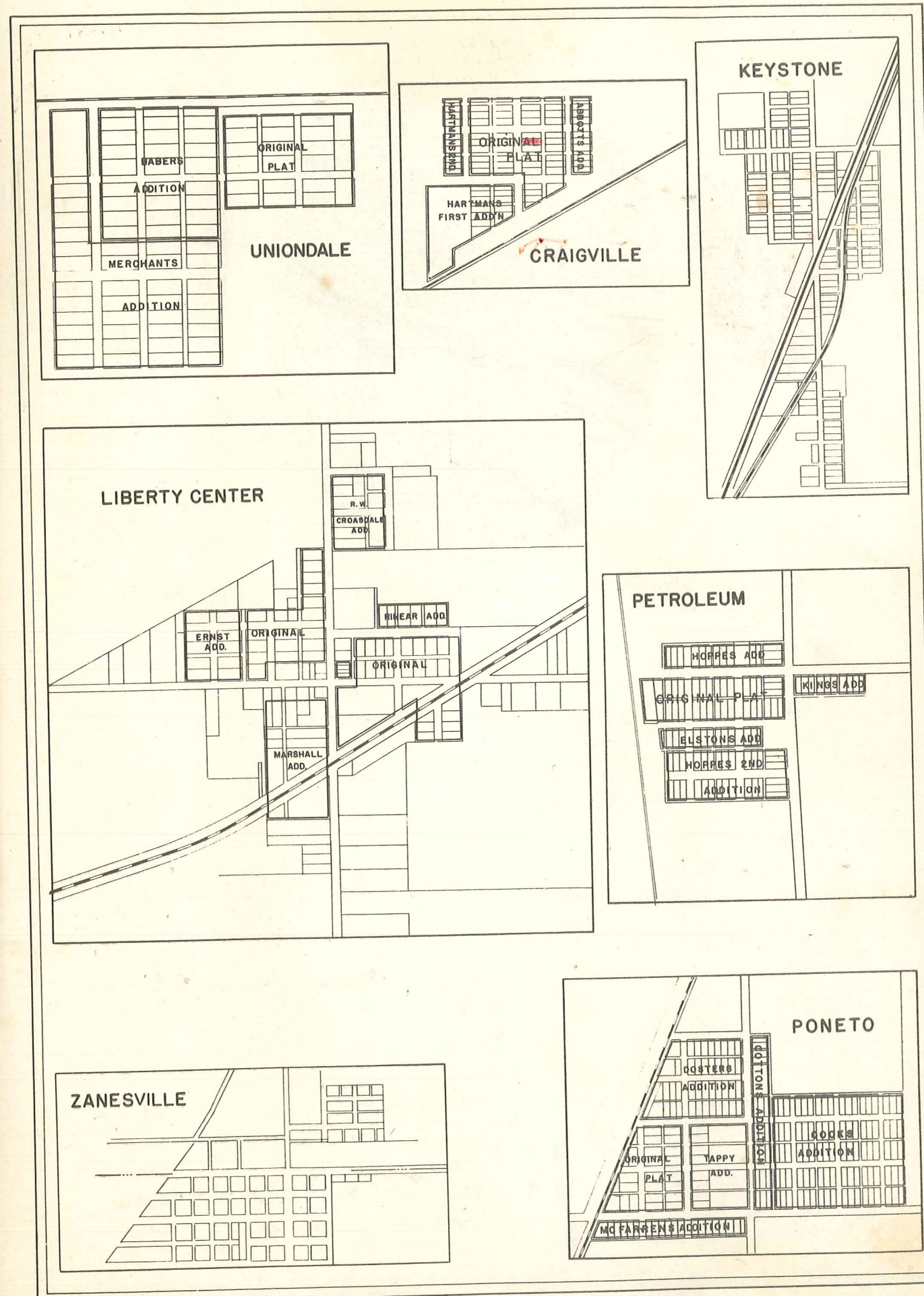
- Government of Geographical units and not divided into an array of opposing industrial classes
- Government of open discussion and not by intrigue, chicanery, or alliance with rackets
- Rotation under the Merit System and not a perpetuation of political reward

**County**

- Qualified officials adequately paid
- Keep the "two per-cent fund" out of our County
- Limited tenure of office

**Wells County Republican Central Committee**

IRA G. BAKER CHAIRMAN    ETHEL WILLIAMSON VICE-CHAIRMAN    THOMAS E. MILLER SECRETARY    HAROLD BOWMAN TREASURER





**Tree Surgery Service=C. J. Grimes** BLUFFTON, IND. PHONE 163

**W. A. HALL**

General Insurance

Life-Auto-Fire-Compensation

416 W. South St. Bluffton, Indiana



**Linn (Red) Gregg**

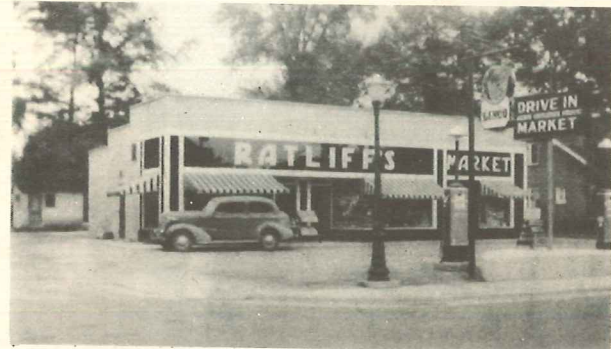
LINCO GASOLINE and MOTOR OILS

TIRES

CONFECTIONS  
203 East Market St.

**RATLIFF'S DRIVE-IN MARKET**

EVERYTHING IN  
GROCERIES - MEATS  
AND FRUITS



OPEN EVERY NIGHT  
AND SUNDAY

730 S. MAIN PHONE 1

**BEATRICE Creamery Co.**  
Buyers of  
Cream - Eggs - Poultry  
Fred Murray, Manager

**Linco Products**

Gasoline and  
Motor Oils

Manufacturers of  
**ICE and ICE CREAM**

Jobbers of  
**SOFT DRINKS and BEVERAGES**

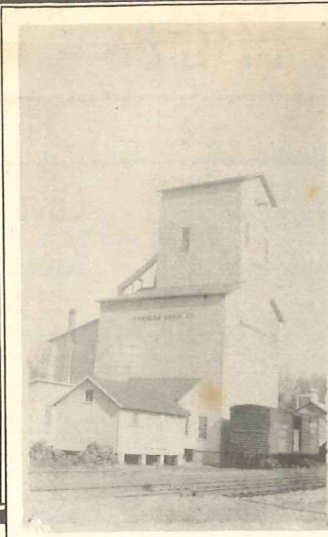
WITH the many years of successful operation behind us, we are always glad to serve your wants when it comes to purchasing quality products that we handle or manufacture in Wells County.

**BLUFFTON PURE ICE & COAL CO.**

815 W. Cherry St. Phone 78 Bluffton, Indiana

Lawrence Leimgruber, Mgr.

Feed, Coal,  
Grain, Seed  
Feed Grinding  
and Mixing



Quality  
Service  
Price

**FARMERS GRAIN CO.**

O.D. WAY, MANAGER

LIBERTY CENTER

**HECKMAN'S**  
ON THE CORNER

**MOBIL GAS**

LIBERTY CENTER, INDIANA

**J. R. HAUGHTON**  
GENERAL STORE

Meats Groceries Dry Goods

LIBERTY CENTER, INDIANA



**WASSON'S**  
General Store

GROCERIES  
MEATS  
LUNCH  
HD'W.

PHONE  
1 on 27  
**Tocsin**



electrical  
WORK  
**LUNCH**  
**SOFT-DRINKS**  
Texaco and  
INDIAN  
Products  
**Ralph Bolfin**  
liberty center



**Dale Ulmer**

Tobaccos  
Candies  
Lunch

**Poneto**

A QUARTER CENTURY OF SERVICE  
We are proud to be the leader in quality goods, variety of staple merchandise, price, prompt and courteous treatment of our customers, and length of service.

**J. C. TOMAN Poneto**  
Liberty Center Phone 16 on 13

**Jess Barrington**  
GENERAL MERCHANDISE  
WOLVERINE SHOES  
PONETO PHONE 7 ON 14

IF IT'S MADE OF LEATHER, I CAN FIX IT  
 FRED MELICK PONETO







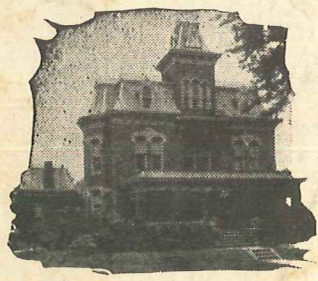
**Farmers & Merchants Bank**  
BLUFFTON, INDIANA

Serving Our Community Is Our Hobby

GIVE US A CHANCE TO HELP YOU  
OUR TIME IS YOURS

FEDERAL DEPOSIT INSURANCE

**FARMERS & MERCHANTS BANK**



**A Real Home**

We call our establishment a funeral home. So far as lay within our power, we have tried to make it a real home for families which have suffered the loss of a loved one. Here in the quiet, refined atmosphere of a private residence they may perform all the necessary duties of this trying time with the utmost of privacy and convenience.

**RALPH M. JAHN**

PHONE 109

Lady Attendant      Ambulance Service  
"We Serve As We Would Be Served"

**H. J. JOHNLOZ**  
GENERAL MERCHANDISE



Everything  
in  
Murray  
Phone  
6 on 2 Tocsin

**GERBER'S  
IGA STORE**

GENERAL MERCHANDISE  
BUYERS OF POULTRY AND EGGS

Craigville

Phone 43

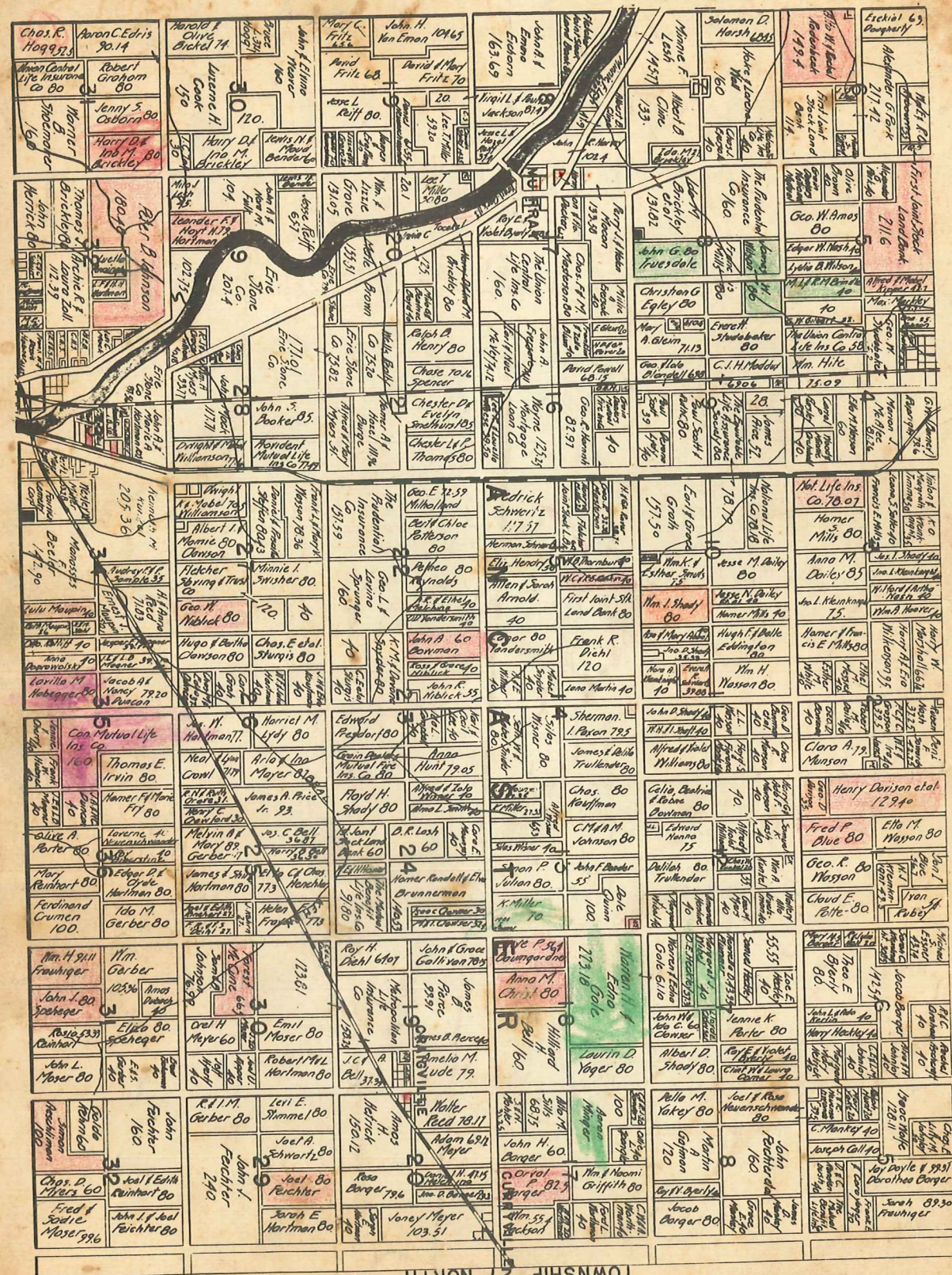
**AARON MINGER**

Craigville Hardware and  
General Machine Work

Phone 40

**CRAIGVILLE  
ELEVATOR CO.**

PURINA FEEDS



TOWNSHIP 27 NORTH





















# DREWRY'S

## ALE AND LAGER BEER

*The Finest*  
 in  
 ALE and BEER  
 AT A  
 NEW LOW PRICE



DREWRY'S LIMITED, U.S.A.

SOUTH BEND, INDIANA

From  
**C. J. and H. E. GRIMES**  
 Tree Surgeons and Roof Specialists  
 903 West Central Ave.  
 BLUFFTON, INDIANA

*Bluffton, Ind. 47820*  
*Bluffton, Ind. 47820*  
*Bluffton, Ind. 47820*  
*Bluffton, Ind. 47820*  
*Bluffton, Ind. 47820*

U. S. POSTAGE  
**Paid**  
 Bluffton, Ind.  
 Permit No. 101

RURAL ROUTE BOX HOLDER  
 LOCAL